

NAVIS™

YACHTS DESIGN & LIFESTYLE

Issue 49 | August / September '19

HEESEN 55m

LAURENTIA



Vitters 54m

Adèle

Icon 77m

Legend

Regattas

23rd Superyacht Cup Palma

Lifestyle

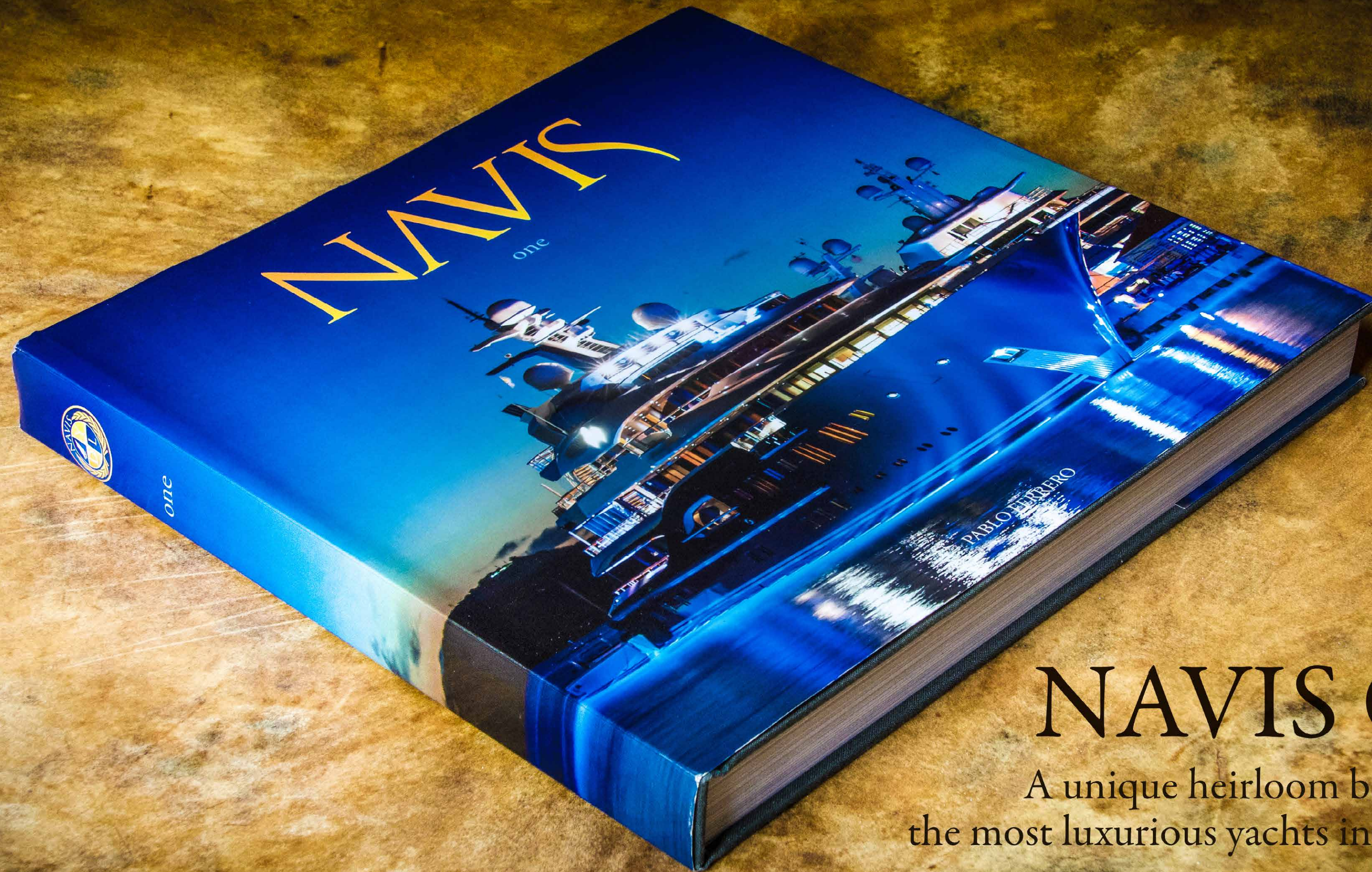
2019 Venice Art Biennale

Jumeirah Living in London

Maserati Levante S GranLusso

www.navisyachts.com





NAVIS One

A unique heirloom book about
the most luxurious yachts in the world

Order your copies: +1 786 406 6111 - enquiries@navisyachts.com - www.navisyachts.com/store

An impeccable, 240-page presentation,
every chapter covers, in meticulous detail,
the most amazing superyachts
cruising the waters today.





A perfect mix of Motor Yachts and Sailing Yachts transports the reader into a world of adventure, passion and luxury that few have the privilege to experience.

NAVIS One is an exceptional book that will be cherished for years, not only for its fascinating reading, but also for its value as a design resource.

Order your copies: +1 786 406 6111 - enquiries@navisyachts.com - www.navisyachts.com/store



Legend



Adèle



Laurentia



Levante S GranLusso

Contents

Icon 77m	
Legend	15
Vitters 54m	
Adèle	41
Heesen Yachts 55m	
Laurentia	63
Scintillating sailing at the 23 rd Superyacht Cup Palma	83
Maserati	
Levante S GranLusso	101
NAVIS Connoisseur	110
Jumeirah Living in London	113
2019 Venice Art Biennale:	
Europe at Her Very Best	127

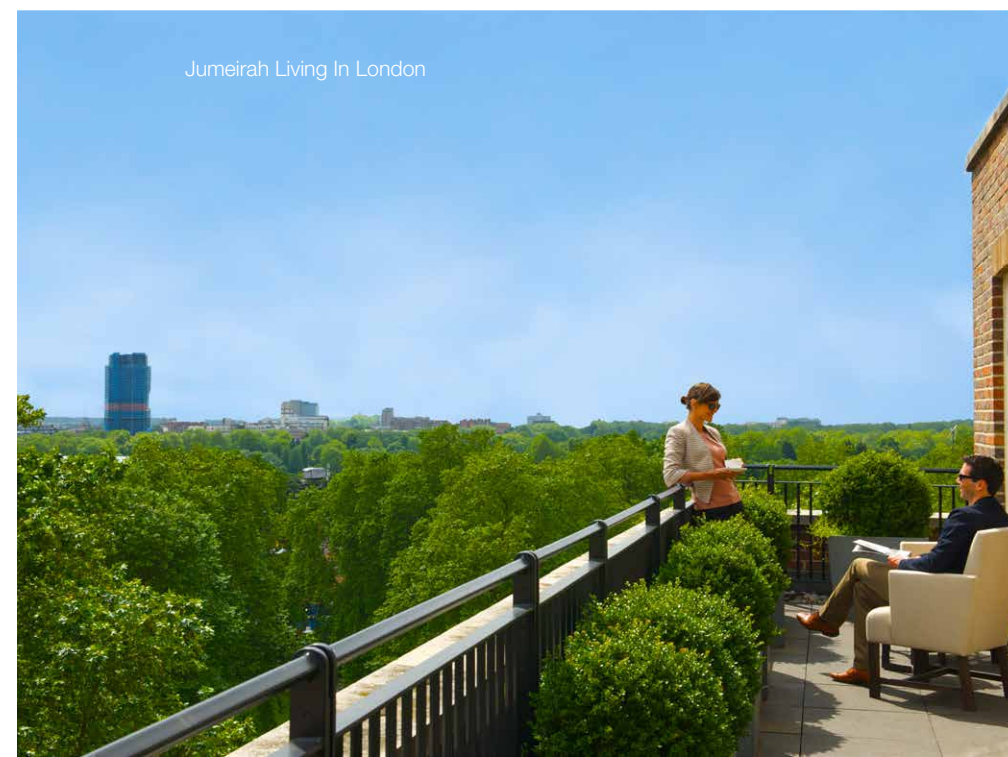
* For queries or information requests about the yachts in this issue contact: enquiries@navisyachts.com



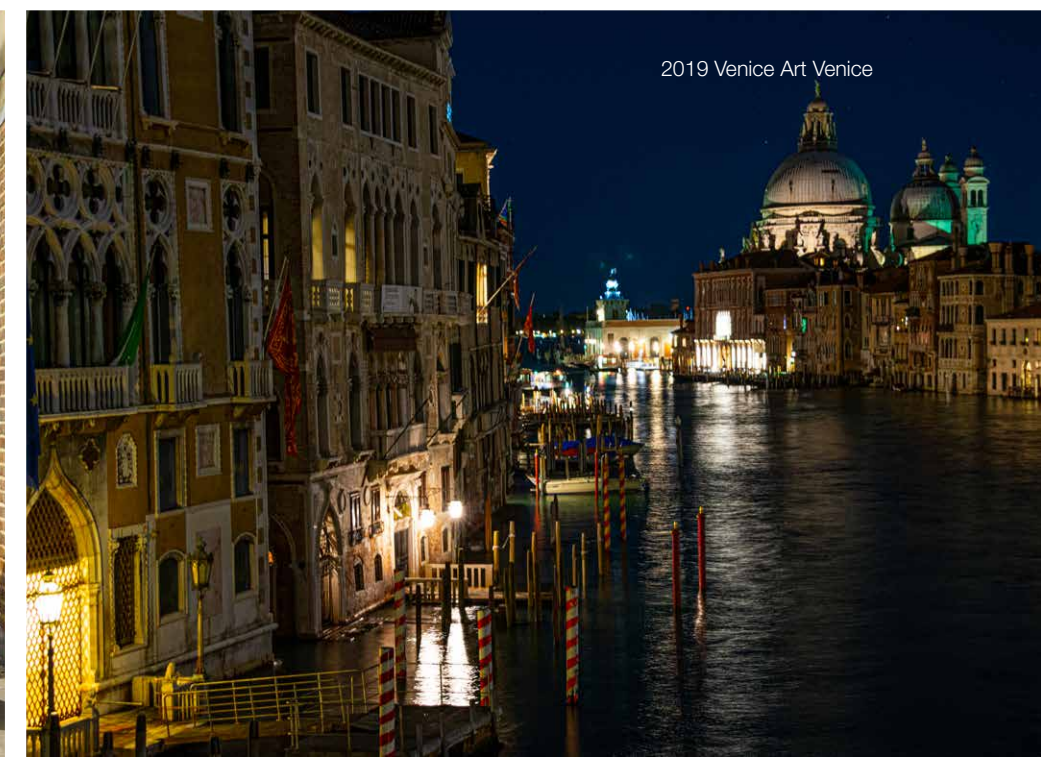
23rd Superyacht Cup Palma



NAVIS Connoisseur



Jumeirah Living In London



2019 Venice Art Venice

STAFF

Year 8 - Number 49
August - September 2019

Editor-In-Chief, Director:
Pablo Ferrero
Editorial Assistant:
María Donadio

Contributors:
Brian Handcock, Jodie Oaks, Robin Griffith, Steve Lumley, Andrew Paniello, Emma Hersh

Design:
Gabriel Parra

Contributing Editors:
Jorge Arcuri

Photography:
Rick Tomlinson, Christopher Scholey, Quin Bisset, Jeff Brown, Sailing Energy, Maserati Media, Tom Bunning Photography, Rolls-Royce Media, Nanoleaf Media, Jumeirah Hotel and Resorts Media, Palazina Grassi Hotel, San Clemente Palace, Pablo Ferrero

Advertising:
advertising@navisyachts.com
Letters/Comments: contact@navisyachts.com
General Enquiries: info@navisyachts.com
Subscription Enquiries: contact@navisyachts.com
<http://www.navisyachts.com/store>

Website: www.navisyachts.com
Navis Yachts is published by **Fiat World Communication LLC**.
Copyright Fiat World Communication LLC. ISSN 2160-7966. All rights reserved. Reproduction in whole or in part without prior written permission from the publisher is strictly prohibited. Great care has been taken throughout the magazine to be accurate, but the publisher cannot accept any responsibility for any errors or omissions which might occur. Although every care is taken with manuscripts and photographs submitted.

Navis ISSN 2160-7958 (Print)
Navis ISSN 2160-7966 (Online)
Navis Yachts is a bimonthly publication:
Fiat World Communication LLC
201 S. Biscayne Blvd., 28th Fl, Miami, Florida, 33131
t. +1 (305) 913 1337



Amels announce the launch of Superyacht Nomad

The second Amels 180 launch of the year sees the striking superyacht Nomad take to the sea.

The Dutch boatbuilder announced the new 55-meter launch at its Vlissingen facility with news that another yacht from the Amels' Limited Editions range has been sold.

M/Y Nomad has a trademarked bespoke color scheme which was created by her owner along with Amels in-house team and exterior designer Tim Heywood.

The blue hull and anthracite grey superstructure help to create uninterrupted geometry to highlight 'the lines of the bridge and sun deck.'

California-based boutique Bonesteel Trout Hall developed the yacht's custom interiors.

Rutger Dolk, of Amels' commercial team, explained: "The owner and his family have been very involved in the custom exterior and interior design.



Heesen delivers Superyacht Masa

Heesen has delivered the latest of its 50-meter superyachts named Masa after successful North Sea trials.

The owner named her Masa, which means 'my diamond' during a private ceremony. She is the eighth in the boatbuilder's 5000 Aluminium Class, which is now one of the shipyard's most popular ranges.

Onboard, there is capacity for 12 guests in six cabins with a master stateroom on the main deck forward and five lower deck suites. There are also three dining rooms, three lounges, a top deck open-air Jacuzzi and a bar for guests to enjoy.

The interiors have been designed by Cristiano Gatto and feature silver detail and light colors to create a tranquil atmosphere.

The interior also develops some of Masa's predecessors' most striking design elements, including silver leaf ceilings, curved pieces of furniture and brushed spruce. The distinctive exterior lines of the Masa have been designed by Omega Architects' Frank Laupman and feature a pelican-beak bow with reverse sheer along with a sporty mast. The color scheme is in classic Awlgrip white.



Baglietto launch Superyacht Severin's

A spectacular launch marked the handover of the new 55-meter yacht Severin's which has been constructed by Baglietto.

She is the largest yacht built in the 160-year-old firm's recent history and was launched at their shipyard in La Spezia, Italy.

M/Y Severin's is part of the boatbuilder's traditional T-Line Platform and has been designed by Francesco Paszkowski Design - who also designed the interiors in collaboration with architect Margherita Casprini.

The design reflects the traditional Italian style of Baglietto with side air vents and lowered gunwales with her general arrangements being devised for charter use.

There are six cabins, and the family-dedicated main deck features a large master suite with a central bed along with a walk-in wardrobe and secluded office. There are also two guest cabins on the same deck. A marble lift connects the three decks, and the main saloon at the entrance offers an area enclosed by glass windows that can be opened completely.

Oceanco delivers 90-meter DreAMBoat superyacht

To her owner, the 90-meter superyacht DreAMBoat is precisely that and has now completed her sea trials. The 2950GT yacht from Oceanco has an exterior designed by Espen Øino International and an impressive interior by Terence Disdale Design.

Built from a steel hull and aluminium superstructure, the exterior profile of M/Y DreAMBoat features overhangs from the superstructure and cutouts from the bulwarks to create a 'strong and classic appearance.'

The owner was taken by the engaging exterior lines and classic elegance that helps to sustain her timeless appeal. Also, the interior layout for the DreAMBoat is perfectly suited to its intended use.

She also boasts a full carbon canopy mast house and mast that forms part of the overall design. There is luxurious accommodation for up to 23 guests onboard and room for 33 crew members. The large windows help to flood the interior with daylight and offer unspoiled views.





FWC
Luxury Products Marketing

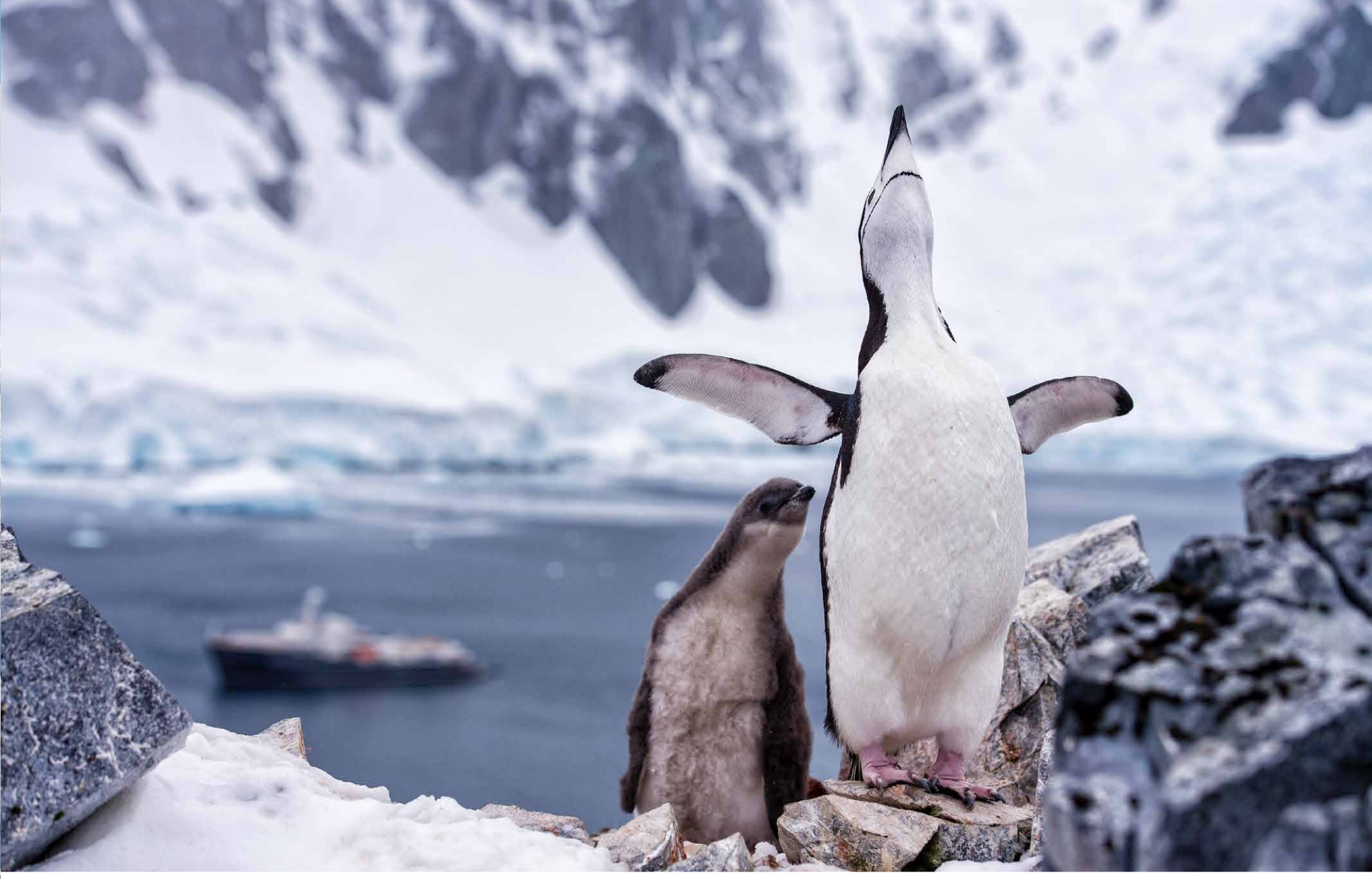
MIAMI - t: +1 305 913 1337 - @: info@FWCadvertising.com - www.FWCadvertising.com



Icon 77m

LEGEND

Photos: Christopher Scholey & Quin Bisset | Words: William Porter





Exploration is a wonderful way to open our eyes to the world, and to truly see that impossible is just a word.
-Richard Branson

Completely redesigned for a life of adventure and exploration, the 77.4-meter expedition yacht LEGEND has everything to take you off the beaten track to the farthest reaches of the earth. Refit in 2015 with every imaginable luxury, she was re-engineered to cruise the harshest climates in comfort and style. With a 7,640 nautical mile range, there is no place the ocean touches that this powerful yacht cannot take you.

Legendary Beginnings

You need to look hard to see past her sleek and sturdy beauty to make out Legend's roots as an icebreaker built for the Russian navy. There is no tougher vessel for exploring polar extremes and far-off places than a steel hull made for crushing through an icepack. But the visionaries at Diana Yacht Design saw beauty in the strong form of the converted working vessel and completely transformed it into a graceful and comfortable pleasure yacht that is tough enough to go anywhere in the world. Interior design by John Misiag and Shelley McNaughton gives every creature comfort in an atmosphere of opulence and splendor.

The owner's design brief demanded a safe, comfortable, and luxurious vessel capable of operating in Antarctic and polar waters. To go into some of the most extreme environments in the world and extend the traditional cruising range of the superyacht past where most dare go. Beyond simply seeing the sights, Legend was to provide entertainment, comfort, freedom, and lots of expedition gear and tenders. Diversions and amusements at the far corners of the earth, to explore and adventure and when the weather is too extreme to go outside. And finally, Legend needed to be beautiful.

The result is a distinctive and powerful superyacht with the attitude of an icebreaker and the comfort of a plush, private resort.

Form and Function

With her athletic bow, Legend shows her pedigree as an icebreaker. Her storied history as a Russian tug from the cold war adds a different feel to her, but Legend's workboat origins are only faintly visible in the sturdy shoulders and the massive bow with the strength to shred pack ice. As the sheer heads aft, that strength turns to beauty with modern styling and comfortable lines, opening up to a modern superyacht stern providing ready water access for guests. This is a vessel that is not meant to be stopped, not by bad weather and not by ice.

With an incredible interior volume, Legend has spacious boutique accommodations for twenty-six in thirteen cabins in a variety of arrangements and decors. Each guest cabin and VIP suite is distinctive with its own unique style and feel. The interior designers eschewed the single-themed look for all the cabins so common on large yachts, opting for distinctive styling and character in each suite.

The unifying themes are comfort, space, light, and luxury. What makes them differ is the mood tone of each suite. The styling in the London suite evokes classic ocean liners and the hunt, while the spacious Moscow suite brings you to the heart of the Kremlin with its deep brown wood and strong furniture. Each suite is a five-star hotel in a major city to delight you and your guests.





Comforts

After a long day outside on a glacier, heli-skiing or exploring the depths, Legend offers every chance to relax and recover in the lap of luxury. Designed for expeditions in remote places, Legend's focus on stunning interior space and amenities which bring guests into the boat is intentional. There are no nightclubs in the Antarctic, no restaurants hundreds of miles from civilization in the arctic circle, and conditions outside often aren't suitable for leisure. Legend makes the superyacht the experience, with myriad entertainments and diversions for those evenings away from the center of things. You won't miss it with her amenities and the beauty and comfort of Legend's interior.

Nestled in the main deck, you'll find the fully equipped gym and a Balinese spa. Relax in the waterfall jacuzzi surrounded by hand-carved Balinese art. Adjacent to the jacuzzi is a full sauna and a massage treatment room.

One deck up, relax in the sixteen-person waterfall pool in the open air of the main deck at the stern. Orcas hunt in front of you against a backdrop of mountains and glaciers as you recline with a chilled drink, faint from the 35C pool rising around you.

The main deck is covered and heated, created a warm and comfortable place to enjoy the natural beauty outside, but out of the wind and weather. All of Legend's heated outdoor spaces are designed for comfort, blocking the wind from seated guests as they sit with a drink from the bar or dine alfresco while the crew prepares a casual barbecue.

Forward, find the main salon, and the opulent dining room and lounge, a spacious and airy room with comfort seating for world-class dining. After dinner, enjoy a digestif around the fire as you sink into the soft, white leather lounges with your guests.

Past the main salon is the whiskey bar and cigar room. Sip a fifty-year-old single malt around the compass rose laid in tile on the floor, with the ambience of warm wood panels in a quiet library setting.

The upper deck features another open, heated deck with an outdoor bar and grill. Step inside to the spectacular piano bar. A self-playing Mason & Hamlin keeps the ivories tinkling as guests enjoy the panoramic views. The rich, wood decks warm the room and white, and brown décor evokes the glaciers and mountains, bringing elements of the landscape to the comfort of the lounge.

Open sky awaits on the Master Deck, where the helipad converts to sunbathing and lounge space when the helicopters are not in use. Midships the five-ton cranes handle the ship's boats and submersible before doors open into a small lounge and the adjoining guest suites and the master suite.

The owner's stateroom forward, also known as the Paris Suite, is a testament to elegance and beauty. The king plus bed is the centerpiece, surrounded by lush wood and warm cream tones, giving it an understated brightness and warmth. The suite runs the width of the superstructure, with sitting rooms and living space on both sides with sweeping views. Add to this a head with a full bath, and it is a deluxe penthouse in a faraway place.

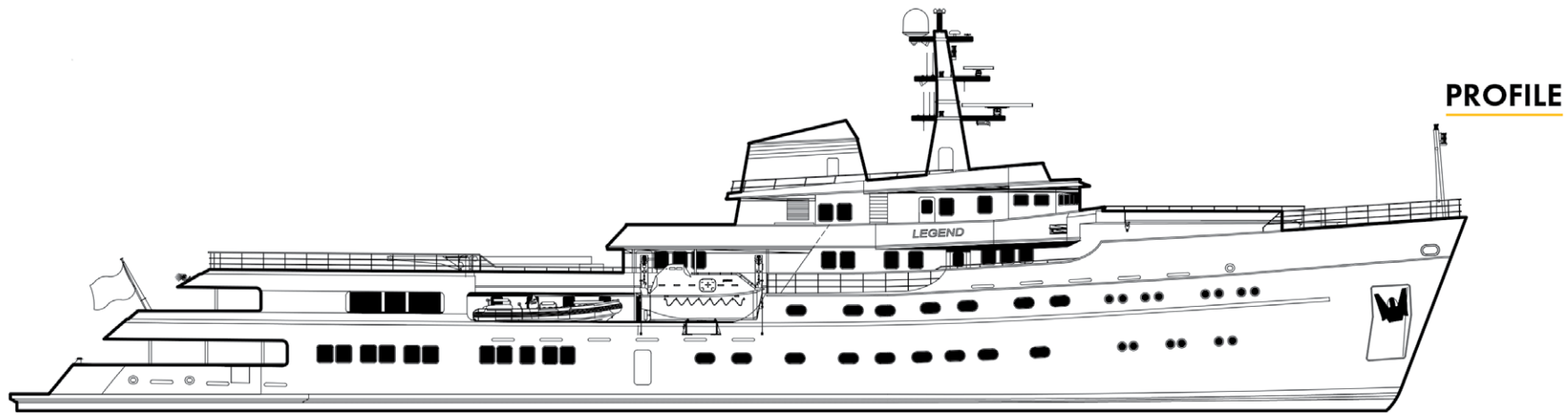




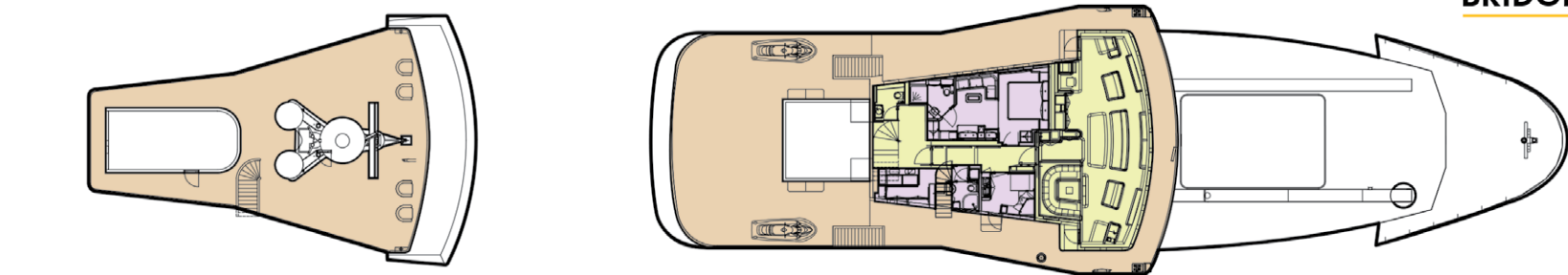




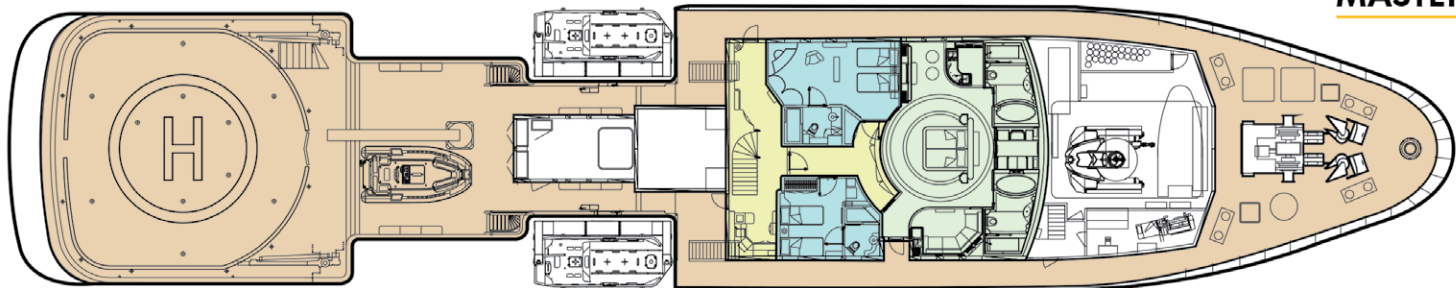




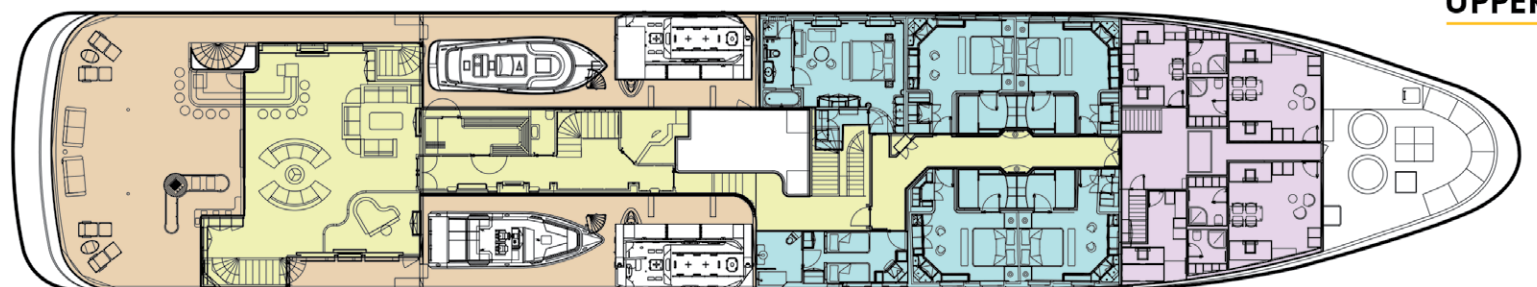
PROFILE



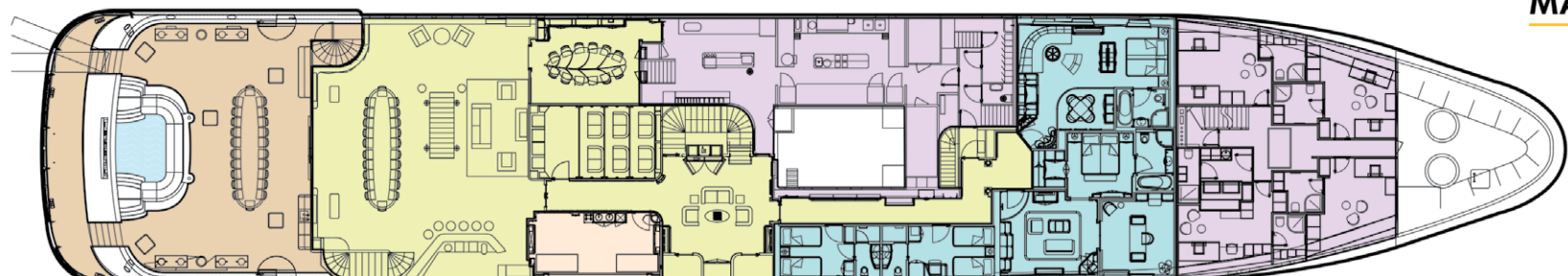
BRIDGE DECK



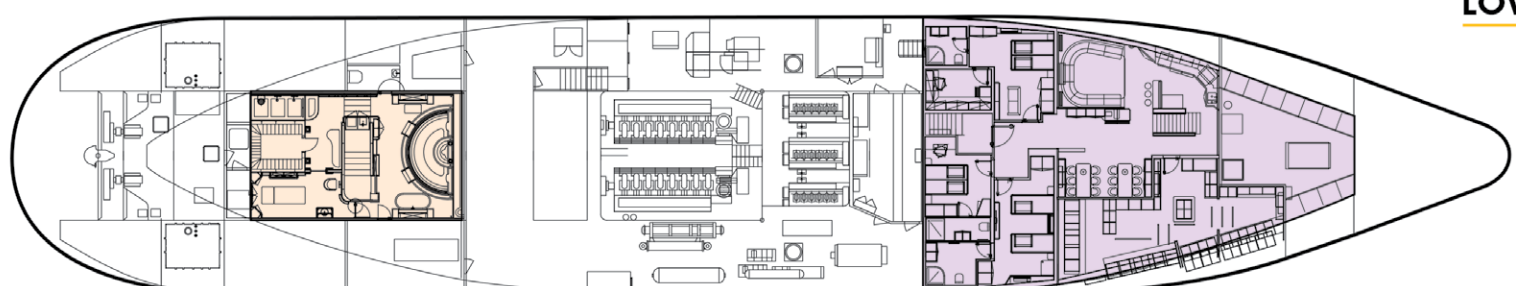
MASTER DECK



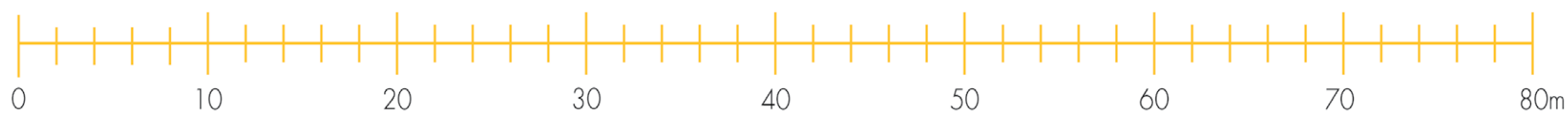
UPPER DECK



MAIN DECK



LOWER DECK



The World is Your Playground - All the Best Toys

Legend is one of the few private vessels in the world to carry and fully support two helicopters as required for safe Antarctic operations. The CAP 437 certified helideck is strong enough for a six-person Eurocopter EC135 and has safety systems and a refueling bunker. This is a full operation platform that is not just for touch and go passenger loading.

Replete with water and land toys, Legend has an immense capacity including two fully equipped luxury tenders, two large zodiac tenders, a tender for the crew, two snowmobiles, kayaks, wave runners, windsurfers, water skis, scuba gear, and a submersible.

The U-Boat Worx C-Explorer 5 submarine takes five people to depths of 200 meters for forty-five-minute excursions, bringing polar exploration to a whole new level with seven trips possible per day. The breathless serenity of under the ice is yours to see.

A Safe Ship in a Dangerous World

The design brief for Legend demands comfort and safety. Though she has the looks and luxury to be a party ship on the Côte D'Azur and beautiful climes, that's not her world.

Legend is more than just Ice Class. She is a fully certified Lloyd's Class 1 icebreaker and holds Polar, Full SOLAS and MCA 13-36 Passenger Yacht Code classifications and fully complies with the 2017 IMO Polar Code. To achieve these safety ratings during refit, a ship of her lineage required extensive modification, strengthening, and a complete redesign of the interior. Fittings had to meet the beauty standards of the designers, but they also had to match the stringent fire, safety, and quality standards of Lloyd's inspectors. Designers added 3.6 meters to the stern and 100 tons of steel and aluminum augmented the original construction, stiffening and strengthening the boat to modern design and safety standards.

With a deep 6.5 meter draft and computer controlled stabilizers, Legend is a sturdy platform in the worst conditions. Windows allow massive amounts of light inside the yacht, but near the water, they are sized for safety and built extra thick to withstand the waves. Comfort is more than plush furniture and a well-stocked bar. It is sea kindly motion on a stable ship and knowing your yacht is capable of the demands you make of her.

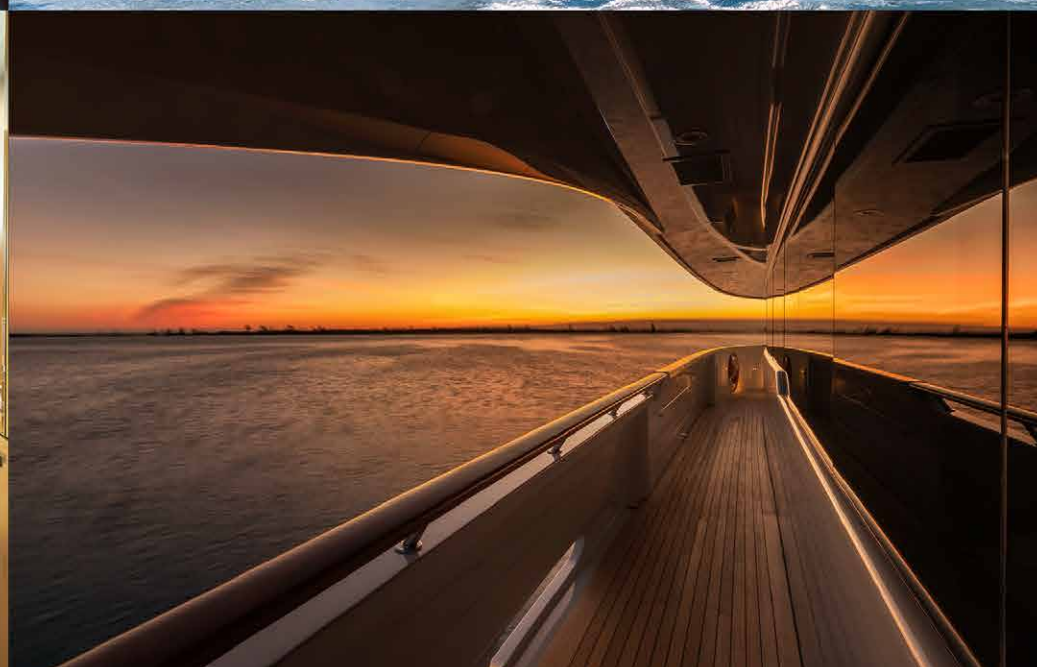
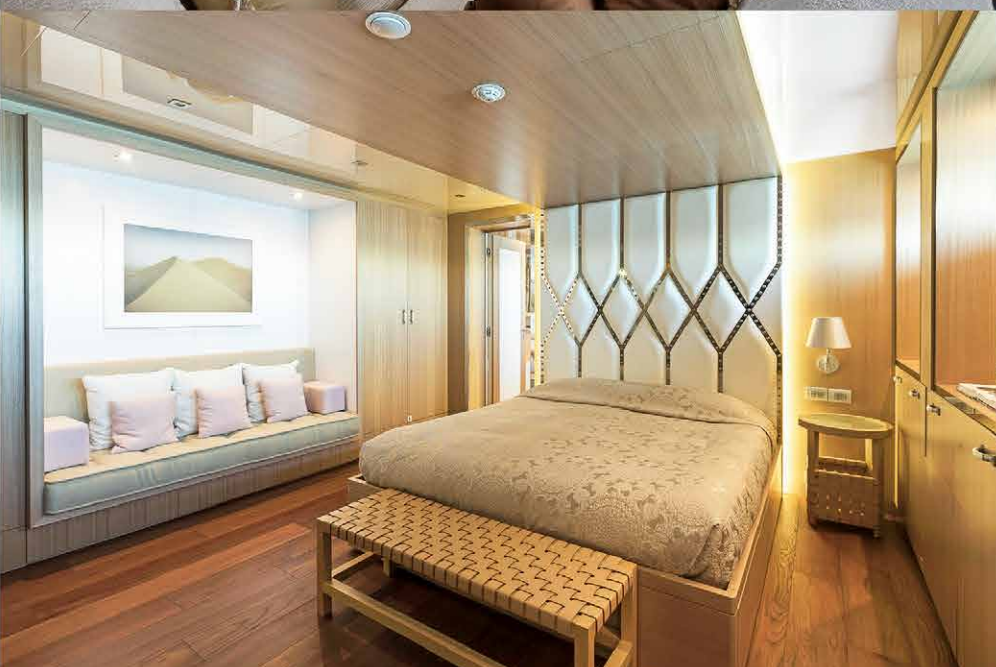
Legend breaks the mold of the superyacht as a warm weather plaything. The game has changed, an expedition yacht opens the world beyond the tropics to remote and largely untouched places. Little escapes the reach of man these days, but Legend will take you there and fill your need to explore the far ends of the planet. ⊕

Specifications

- » Length: 77.40m (253' 11")
- » Beam: 13.50m (44' 3")
- » Draft: 6.50m (21' 4")
- » Speed: 11 knots cruising, 14 knots maximum
- » Range: 7640 nautical miles







Professional Photography
That Conveys Luxury:
The Shot That Sells

Portfolio: www.thierrydehove.com
USA Cell: +1 561 526 3755
Europe Cell: +33 6 40 19 59 56

© 2018 Thierry Dehove Photography. All rights reserved. All the images, or derivative works, can not be used, published, distributed or sold without written permission of the owner.



Vitters 54m
ADELE

Photos: Rick Tomlinson | Words: Brian Hancock





Vitters Shipyard in the Netherlands is one of the finest boat builders in the world. Their slogan is, "It's kind of fun to do the impossible." I like that. I like the playfulness of 'kind of fun' because turning out some of the most beautifully crafted yachts ever built really must be kind of fun. And stressful. And challenging, but also kind of fun when it's all said and done. Over the years they have built many award-winning yachts, but I think that one of their best is the 180-foot Adèle. Not only is Adèle a stunningly beautiful yacht, she has also won numerous awards including the World Superyacht Award, the Showboats International Award, and the International Superyacht Society Award. Each award holds their own prestige, and in each case, Adèle was a very deserving winner. Furthermore, the yacht won all three awards in the same year, a feat that rarely happens.

With the spirit of a true performance athlete, Adèle has the classic lines of the early 20th-century J-class yachts, but she also has a secret, two in fact. Above the waterline, she sports the traditional long bow and stern overhangs and low freeboard, all of which lure you into believing that her performance will be no better than a heavy old classic. However, it's below the waterline that one of her secrets is revealed. The hull is sleek, and modern, and along with the fin keel and rudder was rigorously tank tested with five different keels being examined in order to meet the owner's performance expectations. The keel that provides a draught of 16-feet (4.8 meters) is there to provide stability for the yacht's other secret; a towering main mast and an almost equally towering mizzen mast. This yacht has serious sail power and when combined with Adèle's relatively narrow beam means that she is a dynamic, easily driven Superyacht capable of outperforming yachts of a similar size. In addition to being a yacht capable of exploring remote corners of the world, she is also an exceptional race boat.

Let's take a closer look at this stunning beauty by starting with her layout both on deck and below. The owner's design brief called for there to be two separate areas to the boat; an area aft that would be all to himself, and an area forward for his guests and crew to enjoy. The aft area includes a grand stateroom, an elegant deckhouse and an enclosed cockpit where the owner can relax and enjoy his time on the water in privacy if he so wishes. Forward, a spacious center cockpit and large deckhouse dominate and provide comfort and safety to all who sail aboard. This main cockpit is the focal point for sailing and socializing and can comfortably accommodate forty or so guests. There are four large L-shaped sofas in each corner of the cockpit with twin tables just forward of the helm stations, ideal for coffee or a meal. There is also a central dining table capable of seating ten. Twin helming stations are aft of the center cockpit, ensuring that guests and non-sailors can be included and close to the action. The main cockpit area is covered with a fixed bimini that shades the area from the tropical sun, but cleverly the bimini has windows so that the guests, and more importantly, the helmsman can view the massive mainsail. The bimini also has side windows that can be rolled down in foul weather. The entire area is very adaptable according to how many people are on board, the time of day, the weather and whether Adèle is in racing mode, cruising mode or set up for entertaining.



Forward of the deckhouse is a large, flat expanse of deck, all of it teak giving the yacht a warm traditional look while also maintaining its sleek, no-nonsense style. There is a second, much smaller deckhouse just aft of the main mast but that's the only thing that detracts from the vast expanse of teak. The owner's cockpit is also protected from the elements with a fixed bimini and has two large armchairs either side of the entrance to the aft deckhouse and a U-shaped sofa aft with sunbathing area on deck – a private sanctuary that is also safe and secure.

While it's clear that Adèle provides a magnificent area above decks for entertaining and socializing, her sumptuous interior provides old-world charm, but it's more about relaxing in a cozy space than it is about entertaining. The interior design was done by Hoek Design, but as with most projects of this scope, it was also very much a team affair worked up in a collaboration between the owners, the interior designer, the builder and last but not least, the interior decorator. The main deck house is the major interior social area with the dining table to port opposite low sofas and with a navigation and communication center with chart displays forward. To starboard, half a level down is the captain's office and beyond that the control room with access to the engine room. Descending forward from the deck house is the main saloon and the office-cum-library – a womb-like retreat from the action on deck – housing a collection of exploration books. Internet access and a digital editing suite for photography and video allow for a comprehensive log to be maintained and shared. The entire interior is in rich mahogany with muted tones of light brown and beige for the upholstery. The mahogany has a richness to it that settles one's soul, and while it's a dark tone, there is plenty of natural light from windows that allow you to sit and relax while enjoying watching the world go by.

It's clear from looking at the rest of the interior accommodation that the owner likes having guests on board. Forward of the main salon to port are two sumptuous guest cabins each having their own spacious shower and toilet areas. To starboard is the vast, modern, and very functional galley. In all Adèle has four guest cabins and four crew cabins. While the owner did not skimp of pampering his guests with luxurious accommodation, their cabins pale in comparison to his master stateroom. You can access the stateroom from forward and also access it by descending a rich mahogany stairway - it's hard to call it a companionway - from the private aft cockpit. The stateroom itself is huge and includes walk-in closets and a magnificent bathroom replete with a jacuzzi bath. In addition, there is a large comfortable bed, a seating and dressing area, a private study and in the center a contemporary work of art – the sheathed foot of the mizzen mast

Adèle was designed by Hoek Design, one of the most prestigious naval architect firms in the world. Founded in 1986 by Andre Hoek it is based in the heart of the Dutch yacht building industry. Hoek offers a comprehensive range of styles from truly classic to ultra-modern. The yachts are created by a highly experienced team using the latest design tools. Whether they are modern or classic, they all share a distinctive and elegant Hoek look. Adèle is no different; she is truly an elegant yacht in all sense of the word.









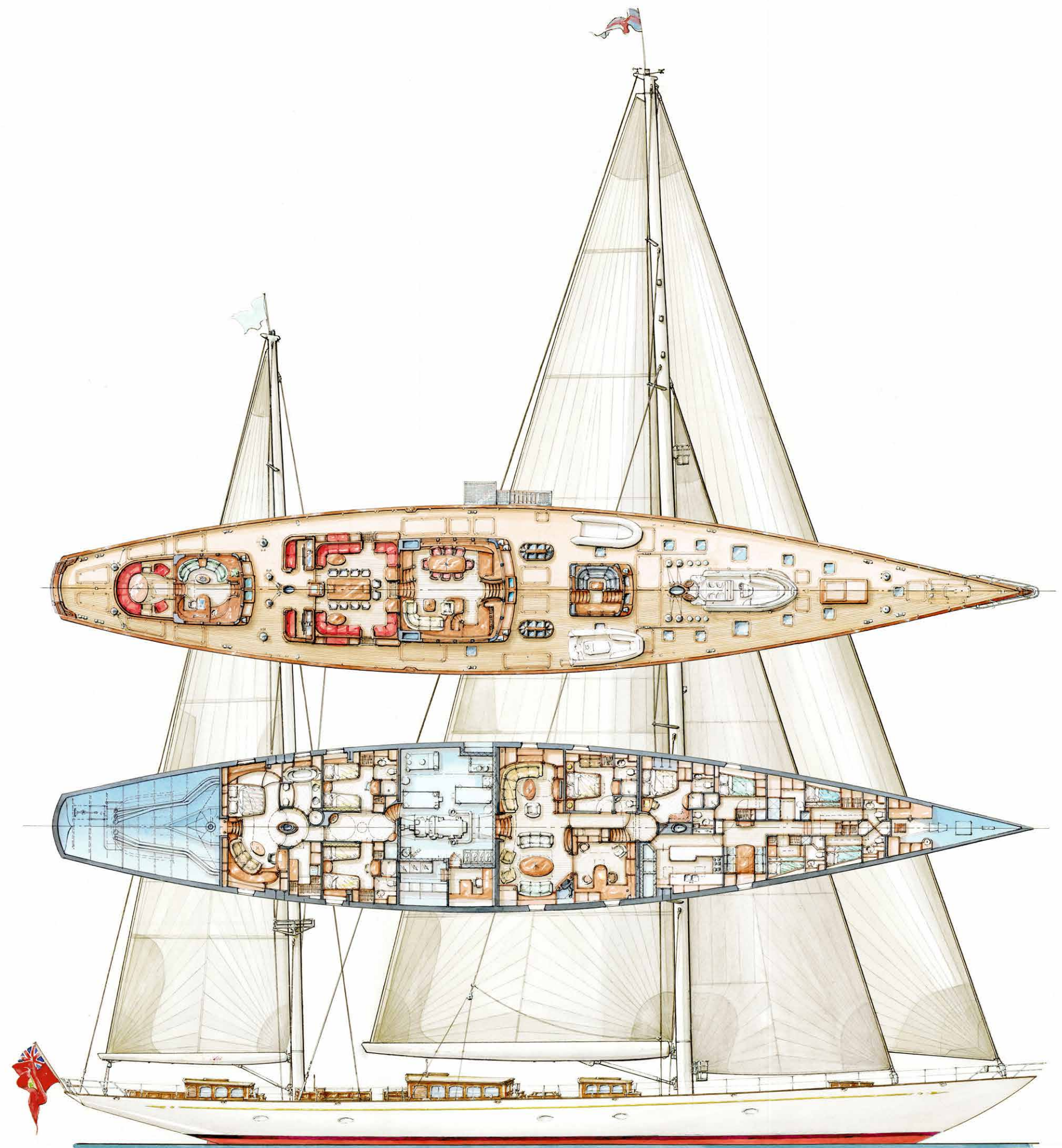


Elegant yes, but also high performance. Her towering carbon fiber mainmast sports five spreaders and stands at 62.5-meters (205-feet) off the deck. The mast height was limited to 205 feet in order for the yacht to be able to pass under the Bridge of the America's in the Panama Canal. Both the mainsail and mizzen are fully battened, and each is operated by an in-boom furling system. The foretriangle is also very powerful with the main headsail on the forestay, and a large staysail on an inner-forestay. Double headsail reaching with full main and mizzen must be a thrill. The total working sail area is 1554 square meters, but it's the massive spinnaker that is a real head-turner. The asymmetrical spinnaker is a daunting 1500 square meters, and there is added power from the large mizzen staysail which can be set at the same time as the spinnaker.

When you combine a sleek, modern underbody, a relatively narrow beam, a precisely engineered hull and a towering sail plan you end up with an extraordinary yacht capable of exploring the very remote parts of our blue marble. Imagine, if you will, being in a fjord in Norway some degrees above the Arctic Circle. It's the land of the midnight sun, but instead of sunset, you get a slight darkening that accentuates the shadows bringing out the striking beauty that surrounds you. The crew took the dinghy earlier in the day and have collected some glacial ice for cocktails. The market had fresh fish caught in the ice-cold waters that surround, so that's what's on the menu for dinner. The table is set under the bimini, and the crack crew delivers a five-star meal. Food always tastes better when eaten al fresco, but aboard Adèle, where the teak is still warm from the day's sun, it's exceptional. Exceptional like the yacht itself. ⊕

Specifications

» Overall length	54.64m
» Length at waterline	38.4m
» Beam	9.5m
» Draught max.	4.8m
» Gross tonnage	338
» Full load displacement	298





It's time to start planning your crew security training

ASD 2019 Courses, Clinics & Seminars:

- Perfect Safe Room
- Protection at Anchorage
- Restricting Access Onboard the Yacht
- Boarding Avoidance
- Anti-Robbery Technics
- Spotting the Intruder
- Preventive Actions Prior Sailing
- Evasive Maneuvering
- Package Found Onboard
- Immigrants Handling
- Immigrants Confining
- Contagious Agents
- Basic Negotiation Skills

Playing roles in security scenarios:

A series of specially planned drills and exercises conducted at appropriate intervals taking into account the yacht type, personnel, port facilities to be visited and other relevant circumstances. Debriefing after scenario unfolds – lessons identified – lessons learned together with our experts.

Contact us for a free consultation and proposal

t: +1 786 406 6111

@: info@ads-superyachts.com

ASD-Superyachts.com

Headquarters:

201 S. Biscayne Blvd. 28fl

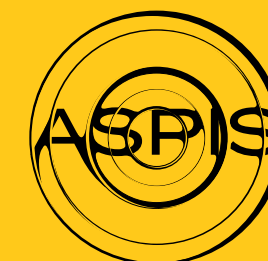
Miami - 33131FL

Education centers in Monaco.

Offices in America, Europe, and Asia

Supported by:

NAVIS





Heesen Yachts 55m
LAURENTIA

Photos: Jeff Brown | Words: Jodie Oaks





A Modern Fairytale; Heesen's 55m Laurentia

When we take a step back to the elements, the ingredients for the good life suddenly become clear; laid back living heightened by simple luxury and a stunning backdrop to enjoy the finery that the shores of Miami and St Tropez has to offer. This is the allure of Heesen's 55m Laurentia.

With a name that echoes of ancient European fairytales, Laurentia is more than a whimsy. Boasting strong muscular lines, a shark-tooth detail overhanging the wheelhouse, racing stripe indents, and a streamlined steel hull that cuts across the ocean like butter, Laurentia is made to stand out in some of the world's most exclusive ports of call.

This is Heesen's largest steel hull to date, and pardon the pun, but it was all hands-on deck when it came to architectural discussions about how to hit those maximum stats in terms of speed, shape, and volume, alongside capturing that beautiful balance between having a yacht that is stable without being too rigid in form. Large rudders, powerful steering, and high propeller pitch all come together to work in harmony – even when fair winds turn into a tempest.

Major Surgery for a Nearly Finished Ship

The ship was nearly at the finish line when the new owner swooped in and saw potential. But he wanted a change. The yacht was beautiful but too busy, and the haven he dreamed of was a relaxed summer hangout. A mile-long wish-list was drawn up, and it was agreed that if Heesen could deliver by the summer, then the owner would sign.

Heesen had two years to deliver their masterpiece and rumor has it, it was one of the most intensive builds curated over scores upon scores of shared WhatsApp messages between owner and on the ground team. The owner never once visited the shipyard to see the progress, but instead picked one of the worlds most reputable European yacht names and chose a canvas nearly completed before bringing in a remarkable riot of expert designers and architects to finish the job.





A Design Always Set to Ocean Time

Frank Laupman from Omega Architects wanted to place emphasis on the pure unrefined pleasures of outdoor living that life on a yacht offers. With this in mind, his precision design of glass inserted into the bulwarks and soaring floor to ceiling windows ensures that the owner's mind is always set to ocean time – lending those laid-back sensibilities that moving with the tides can offer. The long vertical shape of Laurentia was also a suggestion that came from more than a technical aspect but rather from a poetic choice to meaningfully connect sky and sea.

Laupman also really wanted to shine a light on the luxury of outdoor living. As a result, Laurentia has plenty of places to kick back and let the sea-salt and sunshine wash over you. The exterior spaces remain largely unchanged, as the owner agreed that the boat had good bones and it was more the interior that needed addressing. The sun deck is a stunning example of bright and bountiful ocean living, with its warm woods, bubbling jacuzzi, and hefty white loungers and cushions for kicking back and watching the green gauze of the land turn into a small dot.

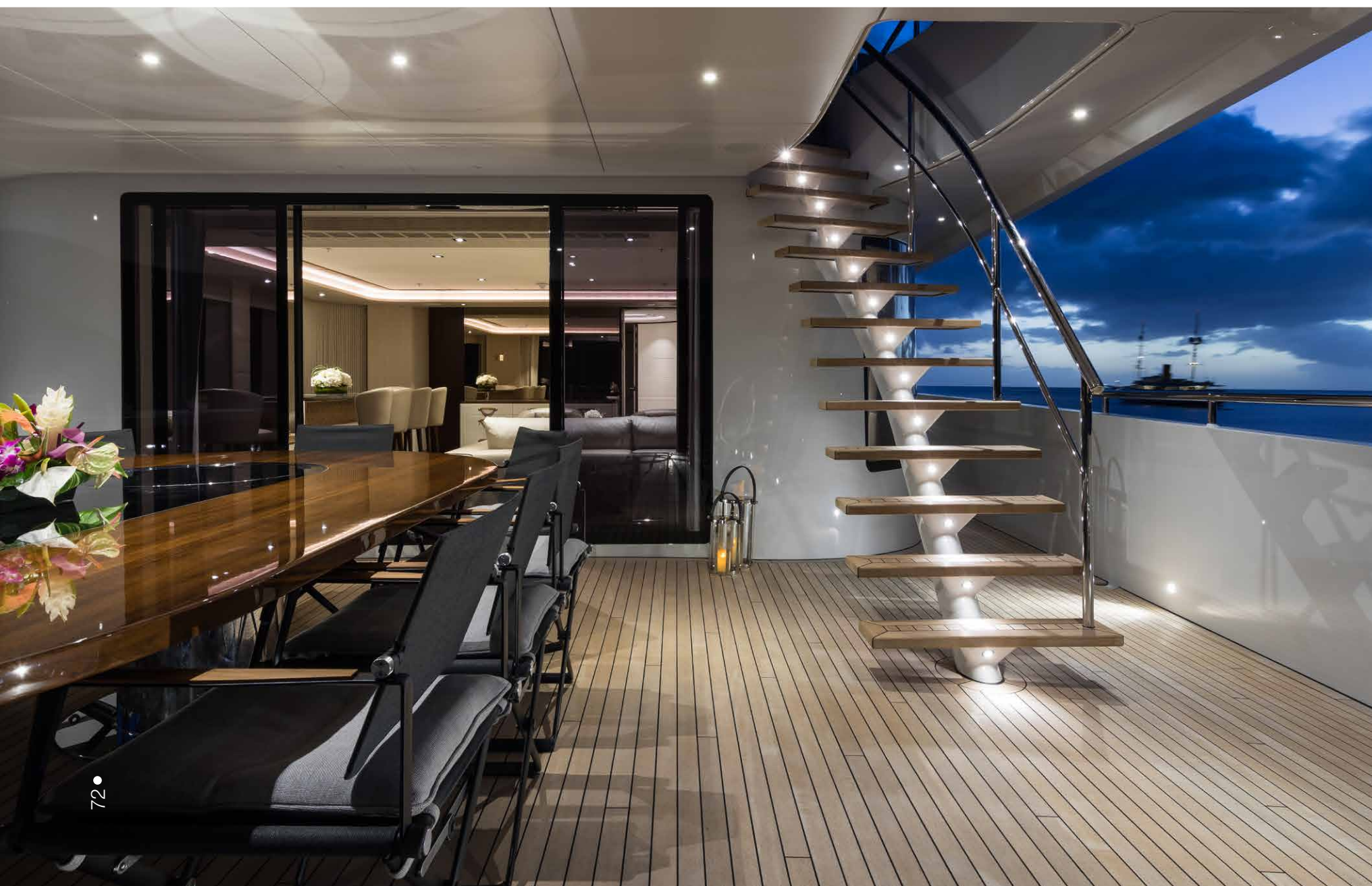
Where Formal and Fun Collide

The upper deck has an extraordinary outdoor shaded dining space that manages to straddle that line between elegant and extraordinarily laid-back. We love the placement of sofas close by so one can easily graze until full and then collapse with a vintage cognac and cigar while still holding conversation with those delving into their desserts.

The main deck boasts another stunning lounging space in the stern, where daylight hours dwindle with cocktails in hand until the moon peaks. At this time, the cozy al fresco space transforms into a delightful outdoor cinema, calling on Hollywood greats to sparkle on the silver screen beneath the stars.

Down on the lower deck and a beach club blazes in soft shades of tones of wengé, taupe and grey – offering a gym for active guests, and easy breezy access into the water. A deep storage area provides more than ample room for the wealth of toys and tenders that gifts Laurentia guests the spirit of life. The crew quarters can also be found down on the lower deck.



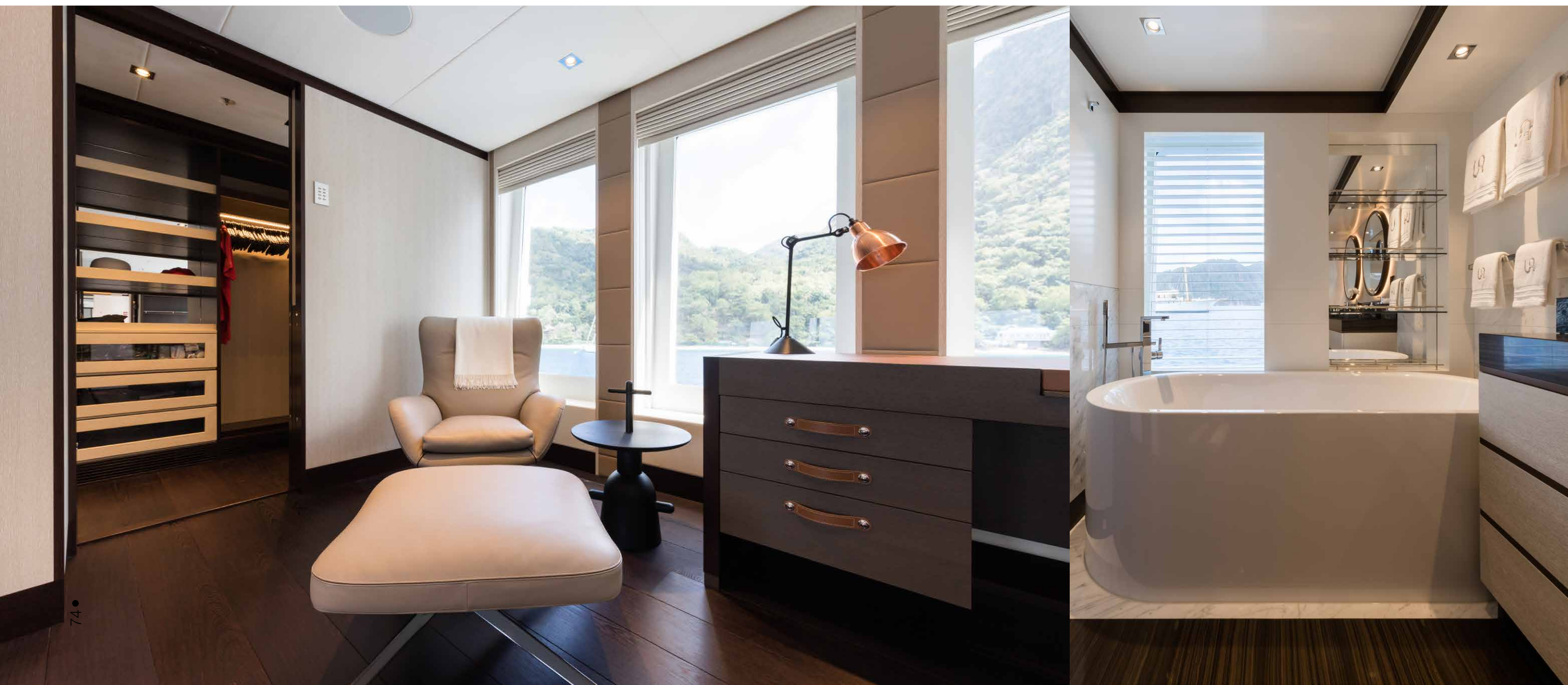




A Contrarian Approach to Creativity

Moving inside the yacht, and this is where most of the project attention was set. The owner truly emphasized the need for Laurentia to be a space to escape the stuffy corporate atmosphere and Miami based design firm – Radyca seemed like the perfect brand to take the challenge onboard. Designer Ramon Alonso took up the mantle, and despite the interior already being close to finished when the owner signed on, a major overhaul was required to make it a dream match.

With only four months to redesign the yacht, Alonso stripped back the floor, furnishings, and lighting – utterly transforming the space into the simple, yet sumptuous floating world that was needed to hit the mark of happiness. “What was dark we made light, what was light we made dark,” the designer shared with a laugh. “We were just stubborn.”



As always with the finest yachts, the delight is in the details, and this is where Ramon Alonso thrives it would seem. Natural hues provide motifs that run throughout – think open-grain white oak, taupe and soft grey leathers so supple to the touch, toe sinking wool carpets, textured suedes, and gleaming Grecale marble.

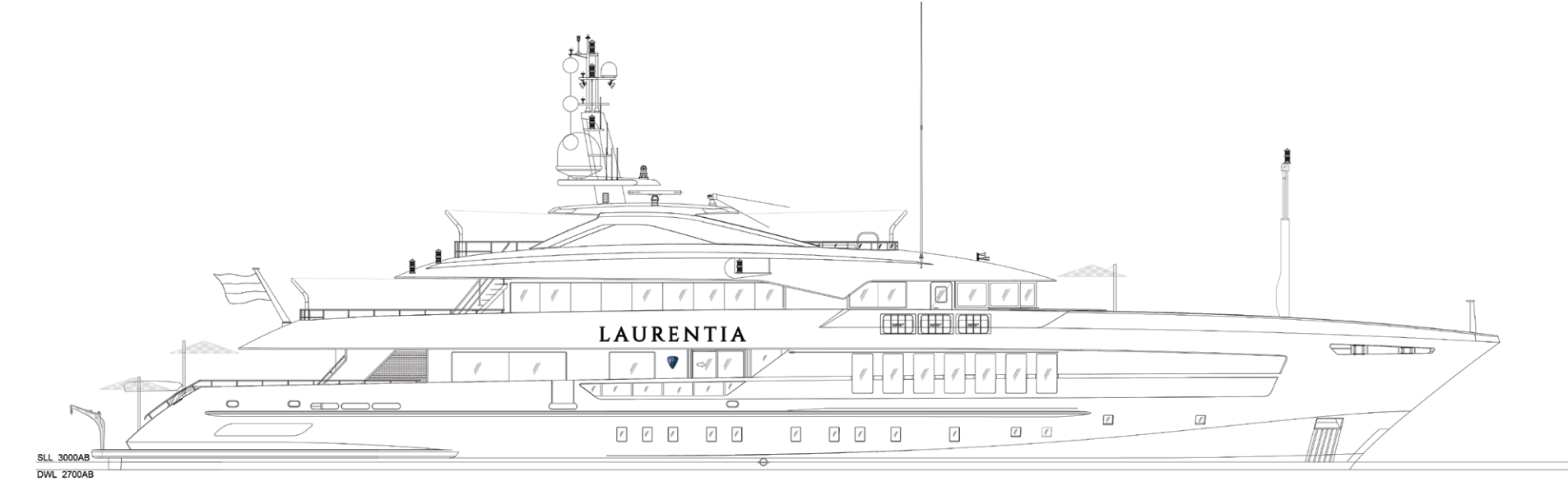
Where Art and Technology Meet

With the design overhaul, all the artisan skills were called on to dramatically change this interior. Interestingly enough, it was the seemingly simple changes that proved the most challenging. The designer shares an anecdote of how the choice to refit the staircase to include a copper light meant taking the whole thing out and painstakingly rebuilding the sweeping spiral staircase step by step. It’s the invisible work you don’t see that goes into creating a simply flawless mise-en-scene. This commitment to absolute perfection is what marks the industry on the map. Where the art of old school artisans and modern technology can truly come together to create something special.

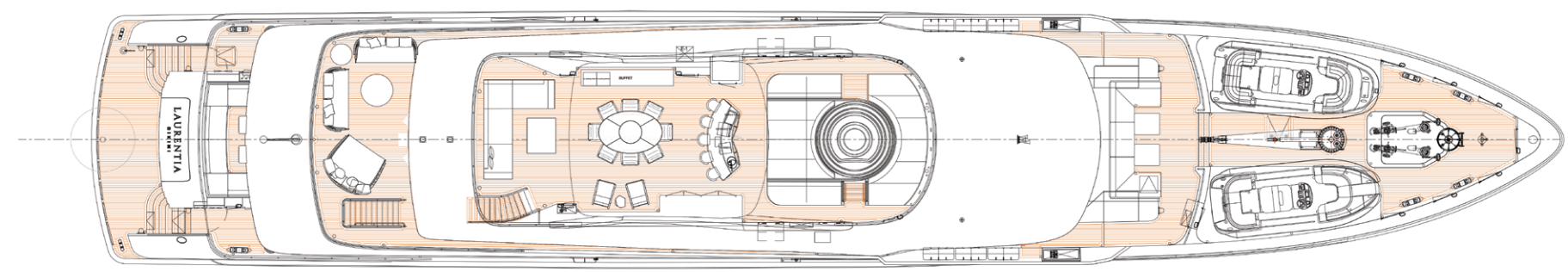
Pure Uncomplicated Cleanliness

The main salon is seamless in its design, again echoing that commitment to both formal suppers and signature lounging both within steps of each other. The dining table is a work of art, all dark delicious hues and grains that lend a lilt of the rustic look to an otherwise sublimely modern space. There is certainly an element of minimalism but in a way that doesn’t seem stripped back and stark, but instead takes a soft and cozy appeal just perfect for the aftermath of days out on the water or exploring slick cities and charming European corners.

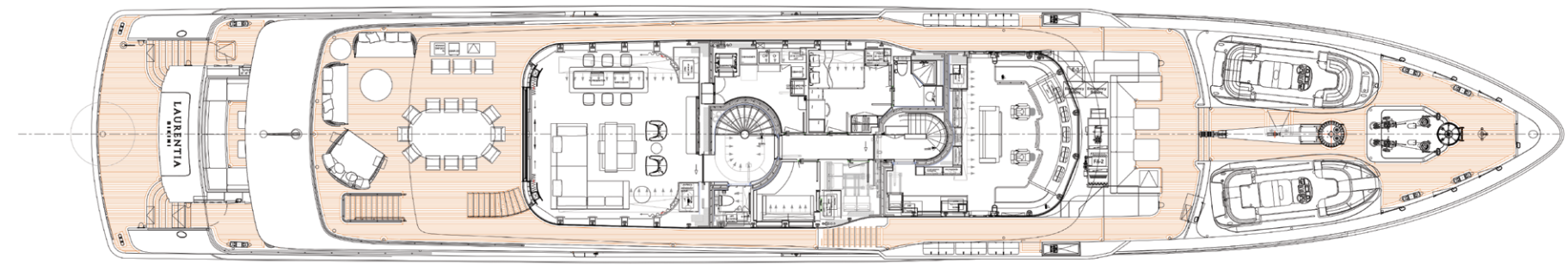




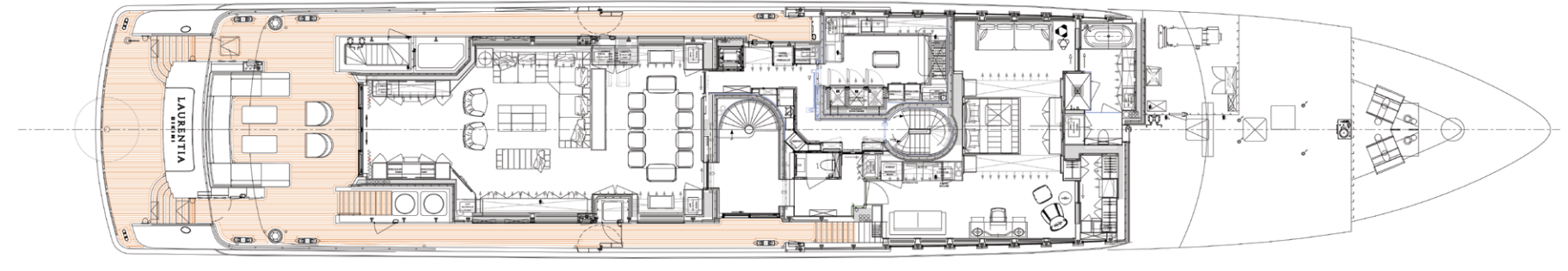
-5 -4 -3 -2 -1 0 1 2 3 4 5 6 7 8 9 10 11 12 13 14 15 16 17 18 19 20 21 22 23 24 25 26 27 28 29 30 31 32 33 34 35 36 37 38 39 40 41 42 43



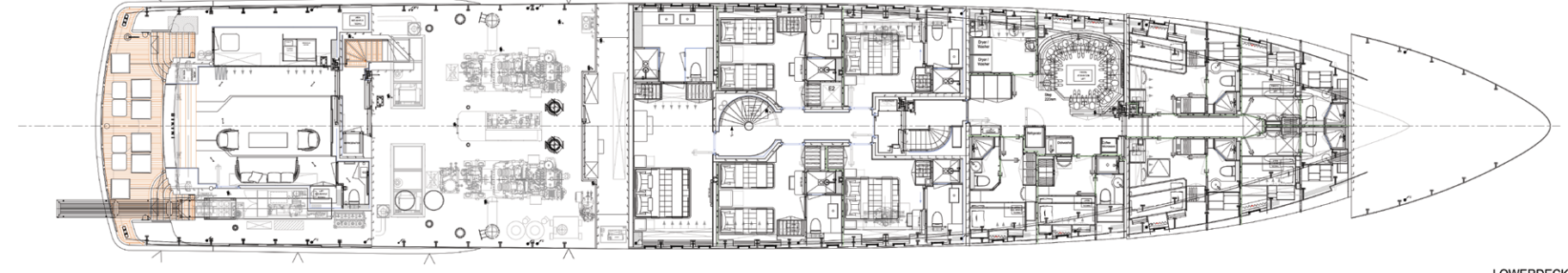
SUNDECK
-5 -4 -3 -2 -1 0 1 2 3 4 5 6 7 8 9 10 11 12 13 14 15 16 17 18 19 20 21 22 23 24 25 26 27 28 29 30 31 32 33 34 35 36 37 38 39 40 41 42 43



WHEELHOUSEDECK
-5 -4 -3 -2 -1 0 1 2 3 4 5 6 7 8 9 10 11 12 13 14 15 16 17 18 19 20 21 22 23 24 25 26 27 28 29 30 31 32 33 34 35 36 37 38 39 40 41 42 43



MAINDECK
-5 -4 -3 -2 -1 0 1 2 3 4 5 6 7 8 9 10 11 12 13 14 15 16 17 18 19 20 21 22 23 24 25 26 27 28 29 30 31 32 33 34 35 36 37 38 39 40 41 42 43



LOWERDECK
-5 -4 -3 -2 -1 0 1 2 3 4 5 6 7 8 9 10 11 12 13 14 15 16 17 18 19 20 21 22 23 24 25 26 27 28 29 30 31 32 33 34 35 36 37 38 39 40 41 42 43

Endless Space to Breathe

Laurentia has space to host 12 guests in complete comfort and style across six suites, including the masterpiece. The master suite is the piece de resistance of Laurentia, capturing a high-tech feel behind those staggering hull glass windows for premium ocean watching.

A cloud-like bed sits beneath Zen-like bamboo panels, gleaming windows flank the edges inviting dreamy oceanscape mornings the minute you open your eyes, and the soft handwoven rug has a playful element in its pattern. The ensuite bathroom invites ocean-view soaks and is designed around a vision of pure uncomplicated cleanliness in both its striking black and white color choices and its clean masculine lines that echo the exterior of the ship. A study corner, generous walk-in wardrobe, and light lounge for relaxing make the master suite nothing short of a fully self-contained suave apartment space for when the owners need some time out from entertaining to recharge.

The other five cabins are dressed in soothing earth and neutral tones calling on the best linens and cottons and again weaving in those motifs of supple to the touch leather and cleansing palates. Two twins and two double cabins all include en-suite facilities made to maximize the comfort of each guest.

Frank Laupman said of the design of Laurentia that “My background is from industry and, while I really like to create to owners’ ideas, I am passionate when it comes to shipbuilder requirements. I thrive for efficiency and rational design.” This beautifully reflects in the artful construction of Laurentia, in an industry that can sometimes lend itself to showiness and fluff, she is nothing short of a breath of fresh air. ⊕

Specifications

» Length	55m
» Beam	9.60m
» Draft	3.2m
» Gross tonnage	740 tonnes
» Cruising speed	13 knots







Scintillating sailing at the
23RD SUPERYACHT
CUP PALMA

Photos: Sailing Energy | Words: Robin Griffith





Carbon Powerhouse

Nilaya's black sailed, carbon silhouette punched its way through the start line chop to emerge ahead of the pack in the opening salvo of the 2019 Superyacht Cup Palma regatta, hotly pursued by Javier Jaudenes' Baltic design Win Win and the aptly named Open Season. Competitors and spectators alike could be left in no doubt that Class A racing had begun in earnest on the azure Mallorcan waters off Palma. Thirteen magnificent, thoroughbred racing yachts all vying for glory in the prestigious opening Panteanius Race.

Tight racing between these three led to a nail-biting finish with Open Season crossing the finishing line first followed by Win Win who later emerged triumphant following careful calculations by OCR's state of the art superyacht handicap system to the obvious delight of her skipper Ryan Taylor who japed that no one was interested in coming second, or third!

Superior boat speed and an extremely well-drilled and disciplined crew, combined to give Valsheda the edge in Class B with a benchmark performance leaving Topaz, helmed by Peter Holmberg, trailing in her wake. Just fifteen seconds separated this pair of J-Class superyachts giving Holmberg more than a little reason for optimism in the races ahead.

In its debut Class C outing, Huckleberry squeezed out the Spirit of Tradition yawl, Bequia to claim top spot in a blistering performance which saw Hoek Design modern classic Kealoha and the mighty fifty-two-meter schooner Meteor finishing third and fourth respectively. Just over thirty seconds separated the first three giving Kealoha's crew and her skipper, James Saddington, every reason to have a spring in their step as they relaxed with fellow crew members, guests and owners at the ever-popular Southern Spars Happy Hour prior to the daily prize-giving and obligatory SYC Dock Party.



Blistering Bullet

Day two saw the sea breeze fill in across Palma Bay with sufficient strength to send the Superyacht Cup fleet on its way in spectacular style with the twenty-third edition of Europe's longest-running superyacht regatta once again delivering close competition across all classes. Rookie crew member Salmon Angombe was barely able to contain his joy as Win Win's crew pressed home their advantage with a second bullet to lead Class A ahead of close rivals Nilaya and Open Season. The eighteen-year-old Namibian was onboard as part of the Marine Inspirations charitable mentoring program introducing disadvantaged young people from southern Africa to careers in sailing.

Meanwhile in Class B, Peter Holmberg's earlier optimism was well-founded as Topaz turned the tables on arch-rival Valsheda to take the win and give both skipper, Rom Loopik and her owner something to smile about at the daily prize-giving. Also smiling were the crew of the Class C yacht, Huckleberry, who were the proud recipients of the North Sails Boat of the Day Award for the boat adjudged to have produced the greatest performance potential in the regatta. This new annual award, comprising of a stunning, limited edition Sterling silver Admiral ship's decanter and glasses is dedicated to the memory of legendary North Sails founder, Lowell North. It was presented by North Technology Group CEO Tom Whidden, in recognition of a crew prepared to push themselves and their boat to the highest competitive levels through efficient sail deployment and proficient race management.

Racing was followed by equally competitive après sail entertainment courtesy of North Sails Happy Hour culminating in the ever-popular Marinepool Paddle Board Challenge where a packed house at the SYC Race Village cheered the boarders home. Later that evening superyacht owners and their guests donned dinner jackets and stunning cocktail dresses in readiness for some mouth-watering Mallorcan cuisine at the Owners Dinner courtesy of the St. Regis Mardavall Mallorca Resort where their Michelin Star chef served up a gastronomic extravaganza from the island's finest produce.







Mallorcan Magic

Clear conditions, sea breeze, and a beautiful Mallorcan mountain backdrop heralded the St Regis Race; the third and final showdown of the 2019 Superyacht Cup Palma. Win Win added yet another win to her tally, continuing her domination of Class A and living up to her name again! Her thirty three-meter length and thirty-three second lead from nearest rival Nilaya was the kind of synergy not lost on skipper Ryan Taylor in his post-race comments. 'Nice clean racing kept simple!' Win Win's second Superyacht Cup success in three years and the overall Superyacht Cup crown for Baltic designer Javier Jaudenes, made one superyacht owner very happy!

Three was the magic number for Topaz as the Class B boats produced some of the closest match racing on their final day of competition. Three races produced three different winners with Topaz coming out on top a single point ahead of J-Class rival Valsheda, much to the delight of skipper Rom Loopik and helm Peter Holmberg. The lightweight flyer Missy, just a point adrift, also put in a very creditable performance.

In Class C the gorgeous lines of Bequia, the thirty-meter Spirit of Tradition Stephens Waring designed yawl, edged ahead of Huckleberry and Kealoha who finished tied on points in second and third place respectively. It was a fitting finale to Bequia's tenth anniversary on the water and a special achievement for her skipper Seumas Meharg and his crew.

Corinthian Competitors

The Superyacht Cup Palma is not just about winners. The Dutch modern classic yacht, Tulip, helmed and crewed by a friendly mix of family and friends seemed to capture this Corinthian ideal. Participating in her fourth SYC, co-owner Alicia van Vissengen summed things up perfectly with these well-chosen words.

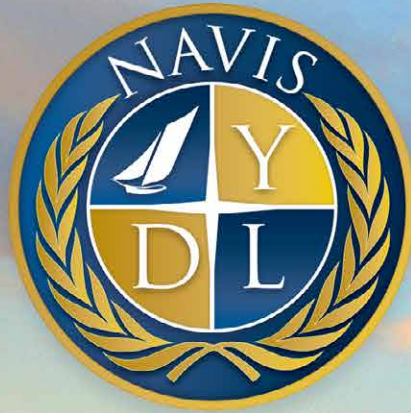
"It's absolutely fantastic. We know we are not going to be first or second, but it doesn't matter as we are enjoying ourselves so much. That's what it's all about; it's really, really fun. Good vibes, lovely people, good organization, great company, and wonderful weather. Palma is fantastic! What more do you want?"

Superyacht Cup director, Kate Branagh could not have been happier. She reported that this year's Superyacht Cup Palma had been a real pleasure for all involved with so many happy faces both out on the water and back on dry land in the SYC Race Village. She was very keen to welcome everyone back in 2020 to the twenty-fourth edition of the Superyacht Cup Palma for another fabulous festival of superyacht sailing and racing. ☺



∞100

D-HYPE



NAVIS

YACHT DESIGN & LIFESTYLE

YACHT SALES DIVISION

We help you fulfill your dream

t: +1 305 913 1337 / e: enquiries@navisyachts.com





Maserati

LEVANTE S GRANLUSSO

Photos: Maserati Media | Words: Steve Lumley



Maserati has become an increasingly important sponsor of yachting events and festivals, particularly at Cannes, and the new offering has an incredible specification with engines delivering hard-to-beat performance.

It's also a very attractive car to look at with potential owners having a choice of engines, either a 3.0-liter twin-turbocharged V6 petrol unit producing 345 bhp, or a twin-turbocharged 3.0-liter diesel engine producing 275 bhp.

Both engines deliver excellent levels of performance and considering the Maserati Levante S GranLusso weighs in at 2.5 tonnes, the handling is impressive.

The 0 to 62 mph sprint time of the Levante S is an incredible 5.2 seconds, with the eight-speed semi-automatic gearbox performing its operation smoothly and quickly. The power delivered from a standing start will impress.

The Italian carmaker has unveiled two special editions

However, for 2019, the Italian carmaker has unveiled two V8 Levante models in the shape of the 590 bhp Trofeo and 550 bhp GTS. These feature the carmaker's 3.8-liter twin-turbo V8 that has been re-engineered to create the most powerful Maserati currently available.

For those wanting the superfast models, the gearshift lever has been redesigned with shorter travel and improved operation for when owners really want to put the car through its paces.

The Levante S GranLusso has all-wheel-drive to help deliver the power to the Tarmac, and it delivers a well-planted feel with good feedback to the steering wheel. For the new V8s, the chassis has been re-tuned to provide a sports-oriented level of performance, and the difference is noticeable.

Overall, for the Levante model line, the fuel economy ranges between 18 and 21 mpg on the highway, to 14-15 mpg in the city. Though realistically, it is such a joy to drive that the economy for an enthusiastic and happy driver is not a matter of concern.

The interior is a luxurious and comfortable place to spend time with the driver's seat easy to adjust for maximum comfort.







Levante S GranLusso's aluminum interior finish

The standard Levante S GranLusso's wood interior trim and chrome surround impress while the new Trofeo and GTS versions feature specific instrument cluster graphics and clock dials. All of the models deliver the sophistication that is now expected from Maserati with the latest models offering a range of leather interior choices to, enhance the luxury or sporty appeal.

Other features that a discerning owner may enjoy include seat ventilation, reverse parking aid with a park assist camera standard in North America. Comfort levels are boosted with the standard dual-zone climate control system with an air quality sensor using 13 ventilation ports.

The Levante models also feature a standard 8-speaker sound system, and the options of either a Harman Kardon premium sound system or the 17-speaker Bowers & Wilkins premium surround sound system.

All offer impressive sound experiences, though the surround sound offering delivers a more immersive - and highly recommended - experience.

The standard air suspension delivers a smooth ride with potholes and lumps dealt with capably. The hydraulic power steering and the rear-biased all-wheel-drive system delivers the handling that drivers will enjoy. It must also be said that the limited-slip differential for the rear axle really does provide the traction in every driving situation.

The S GranLusso also offers impressive off-roading performance with the driving modes and suspension altering to cater for less than smooth surfaces. This feature is certainly an advantage for

those who want a stylish SUV for countries with rough roads and occasional off-roading needs. That's a big help should you need to travel across deserts and mountains and then have to drive along a dirt track for a mile or two – you will arrive in comfort and be unshaken by the drive.

Interior for the Maserati Levante S GranLusso

The interior of the Maserati Levante S GranLusso has been carefully designed and crafted using sumptuous leather and polished wood. There's a surprising amount of technology on board to make this Italian-inspired interior feel up-to-date.

For the new V8 versions, the range-toppers feature a new grille, body-colored door handles, and close of painted brake callipers. The powerful Brembo brakes also work effectively to bring this large vehicle to a stop quickly and safely.

Of the two, the Trofeo offers a more sporty look with ultralight high-gloss carbon-fiber exterior touches.

Moreover, with the premium luxury SUV sector growing exponentially, particularly in the US and China, Maserati has put together an excellent offering to deliver what refined drivers are looking for in a luxurious and spacious SUV.

With its distinctive styling and impressive level of ride and handling, the Levante S GranLusso feels and looks like an impressive SUV.

Essentially, the Maserati Levante S GranLusso offers enough in terms of luxury and exceptional performance to set it apart from its rivals, and it's certainly an appealing and accomplished SUV that will be an inspired choice for discerning drivers. ⊕





NAVIS CONNOISSEUR

Photos: Tom Bunning Photography, Rolls-Royce Media, Nanoleaf Media | Words: Andrew Paniello

Rolls-Royce Champagne Chest Redefines Luxury

Ever since the first iteration of the company was founded in 1906, Rolls-Royce has relentlessly worked to develop a brand associated with luxury, elegance, functionality, and aesthetic excellence. Even though the Rolls-Royce name is generally associated with the fine automobiles they produce, their unapologetic commitment to luxury and perfection takes many different forms.

As of this May, Rolls-Royce is incredibly proud to introduce their Champagne Chest, one of many finely crafted products that have made their way to Rolls-Royce Bespoke Design Collection. As soon as you begin to carefully inspect this masterpiece of a champagne chest, it becomes immediately apparent that Rolls-Royce's values can be found in every product they've ever created.

"The Champagne Chest is crafted for those that seek a heightened sense of occasion in an elegant, entertaining manner and offers the irresistible allure of gadgetry," claims Gavin Hartley, one of the design leads behind the product. Even with just one glance, the chest's elegant shape, fine craftsmanship, and abundant functionality place it in a luxury class of its own.



Standing Behind the Rolls-Royce Name

Only the finest materials available were used in the production of this once in a lifetime champagne chest. The Tudor Oak wood, the high-quality black leather, the rare Mother of Pearl, and the high-quality aluminum casing all help assure that this timeless work of art will maintain its values for many years to come. This not the sort of champagne case that one keeps for a year, or even a decade—it is a work that inevitably becomes the centerpiece of a gathering space until the end of time. It is a statement and a physical representation of what luxury, truly, ought to be.

As you will find in their cars, the design team at Rolls-Royce assured that their Champagne Chest would be as mechanically perfect as possible. With a simple touch of a button, the case majestically presents itself, revealing a prearranged champagne set for four people. The case further features two special caviar caissons, allowing you to live the good life wherever it may take you.

Over the years, it has become abundantly clear: Rolls-Royce is far more than just an automotive company, it is far more than just a brand. She is the standard that all other companies—across the world and maybe even beyond—must aspire to embody. In the pursuit of perfection, luxury, and relentless innovation, there is no surprise this perfect chest bears the "RR" name. ⊕

Nanoleaf Illuminates a Whole New World of Possibilities

Since the dawn of civilization, light has functioned as an unending source of hope, knowledge, and inspiration. We've worshipped the sun, learned to tame fire, and relied on light to survive through otherwise dark and trying times. Consequently, there is no surprise that we've long strived to create light of our own.

Light is perhaps the most important element of interior design. Without light, we cannot see the world as it is nor can we enjoy each of the spaces we're in. Knowing the importance of light and subtle aesthetics, Nanoleaf Canvas may have changed the way we illuminate our world forever.

The Nanoleaf has already been described as having "limitless design potential." The revolutionary touch-controlled smart light system makes it possible to not only control the intensity of the lights, but also control the colors your canvas displays. Upon experimenting with the Nanoleaf Canvas and testing different forms of illumination, it is almost impossible not to feel a sort of divinity, pulsing through your fingers.

The Smartest Lighting System T o-Date

With unlimited design options available, it becomes possible to use the Nanoleaf in almost any setting. The product is illustrated as "a light that can change, shift and grow with you and your

space." The only limitation to the possible light displays you can create, it seems, is your own imagination.

Upon first look, the universality of this product becomes undeniably apparent. At your next dinner party, time aboard your yacht, or any other occasion, you will be able to create an unprecedented lighting display that perfectly matches the mood. The human desire for light has been unrelenting, for generations; finally we have a way to allow our most creative desires come to life.

In addition to having complete control, these revolutionary lights enable you to summon the majesty of the universe into the comfort of your own home. Imagine having thousands of different displays to choose from, ranging from a simulation of the Northern Lights to a welcoming Sunrise scene to every conceivable monad of illuminated beauty in between.

Standing upon the stern deck of a yacht, watching the sun set in the distance, the red, gold, and pink colors of the Nanoleaf create a perfect sort of harmony, rivaled only by nature. As the sun set continues to set, the reds fade to deep blues, perfect capturing the mood and displaying the dynamic elegance of this fine creation. The line between mankind and divinity seems to completely vanish. ⊕

JUMEIRAH LIVING IN LONDON

Photos: Jumeirah Hotel and Resorts Media | Words: Emma Hersh





The Jumeirah Group is a luxury hospitality provider that has been in operation for the past two decades. They are the people responsible for Dubai's Burj Al Arab hotel with its iconic and instantly recognizable profile and its well-founded reputation as the most luxurious hotel in the world. The Jumeirah group has expanded into several markets and has maintained a presence in London as part of its extensive property portfolio.

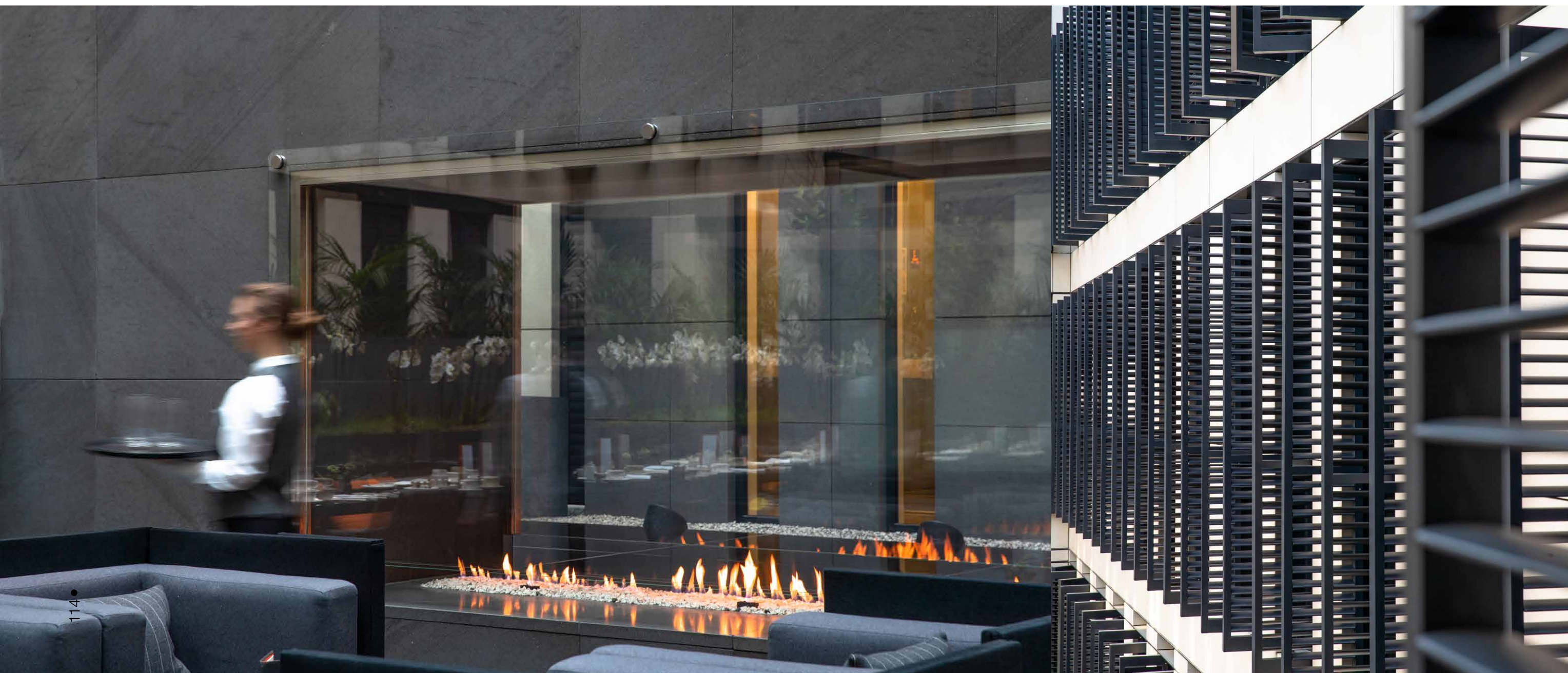
During a recent London stay NAVIS had the chance to experience the exclusive, elegant, and tasteful Jumeirah Living Apartments. We stayed at Mayfair's Grosvenor House Suites, but Jumeirah has several luxury locations in the London area that guests may select from. Jumeirah is dedicated to providing high-end and exclusive hotels and suites, and using their knowledge of hospitality they have acquired, redesigned, and refurbished several properties across London to offer their guests the best in luxury accommodation.

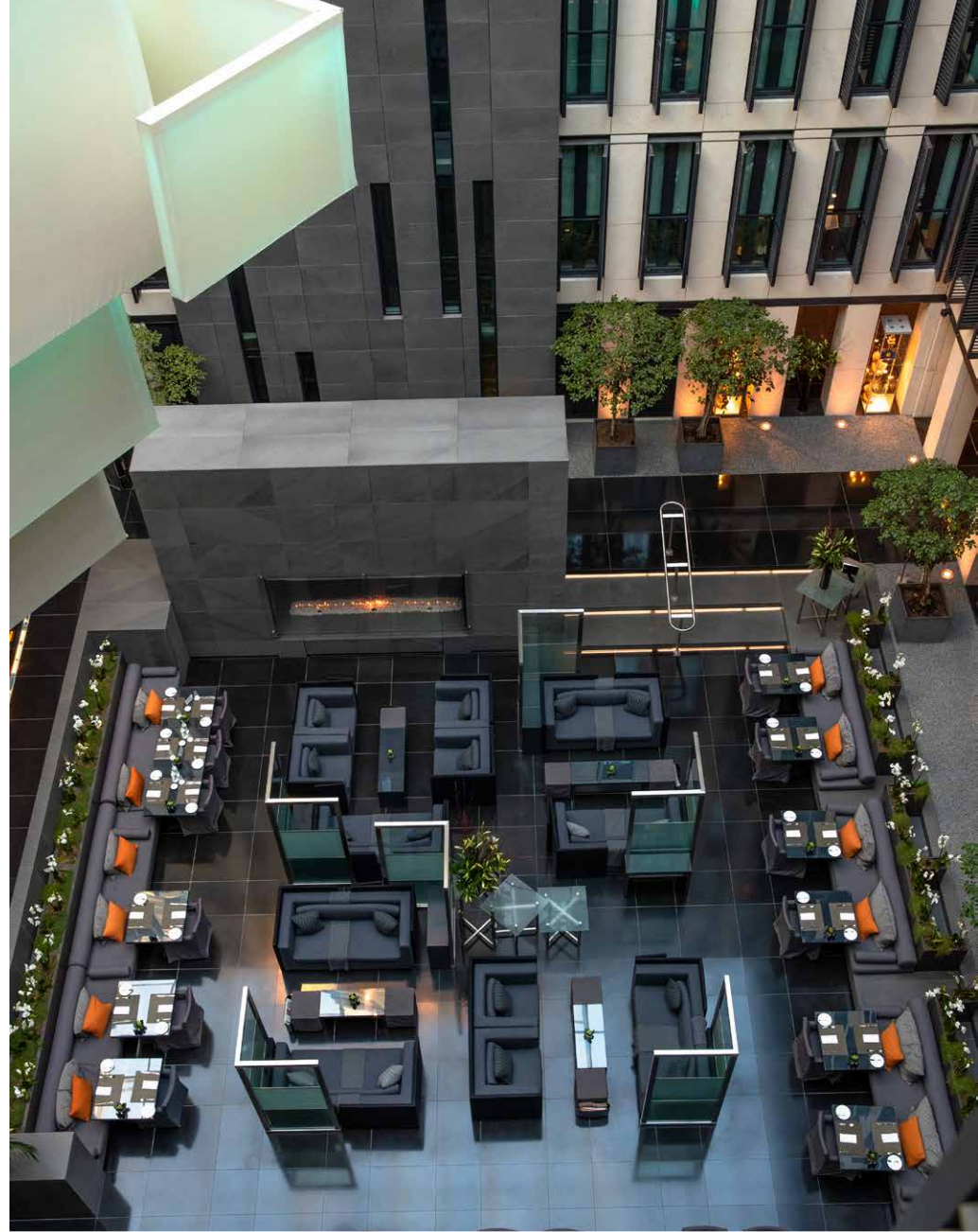
Grosvenor House Suites By Jumeirah Living

After being chauffeured from the airport through London's busy streets in a shiny new Mercedes, we arrived after just 45 short minutes at the Grosvenor House Suites. These are private luxury apartments with an upscale hotel-style ambiance. The stunning location of this Jumeirah Living property is situated right in the heart of London's exclusive Mayfair neighborhood just across the street from the beautiful Hyde Park.

As we entered the simple elegance of the reception belied the true luxury of the rest of the building. A concierge welcomed our arrival and escorted us to the elevator. As the door parted, we were led into a sumptuous and elegant second reception area and welcomed by Peio Elustondo, the properties Marketing Executive, who after introductions, led us promptly to our luxurious two-bedroom apartment. Our luggage had been placed in the room already, and breakfast had been thoughtfully prepared for us.

From the window of the apartment, we had a stunning view of Hyde Park and the passing scene of the upscale Mayfair neighborhood with shops, restaurants, pubs, and historic Victorian homes. Every amenity had been thought of and provided in the suite to make our stay as comfortable and elegant as possible. Access to the property was restricted exclusively to guests, and a digital key card is used for entry and exit to the hotel's areas.





Mayfair is one of the top districts in London, and after a day exploring the area we came back to the Grosvenor House Suites to be welcomed by snacks and refreshments. For something more substantial the Atrium is a must-try. A delightful dining area with natural light and a sky roof located at the center of the building.

Private dining is for guests of Grosvenor House exclusively with no access allowed to the general public, making it probably the most private restaurant in the whole city. The food is delicious and beautifully prepared and plated with the Chef being an expert in Middle Eastern cuisine.

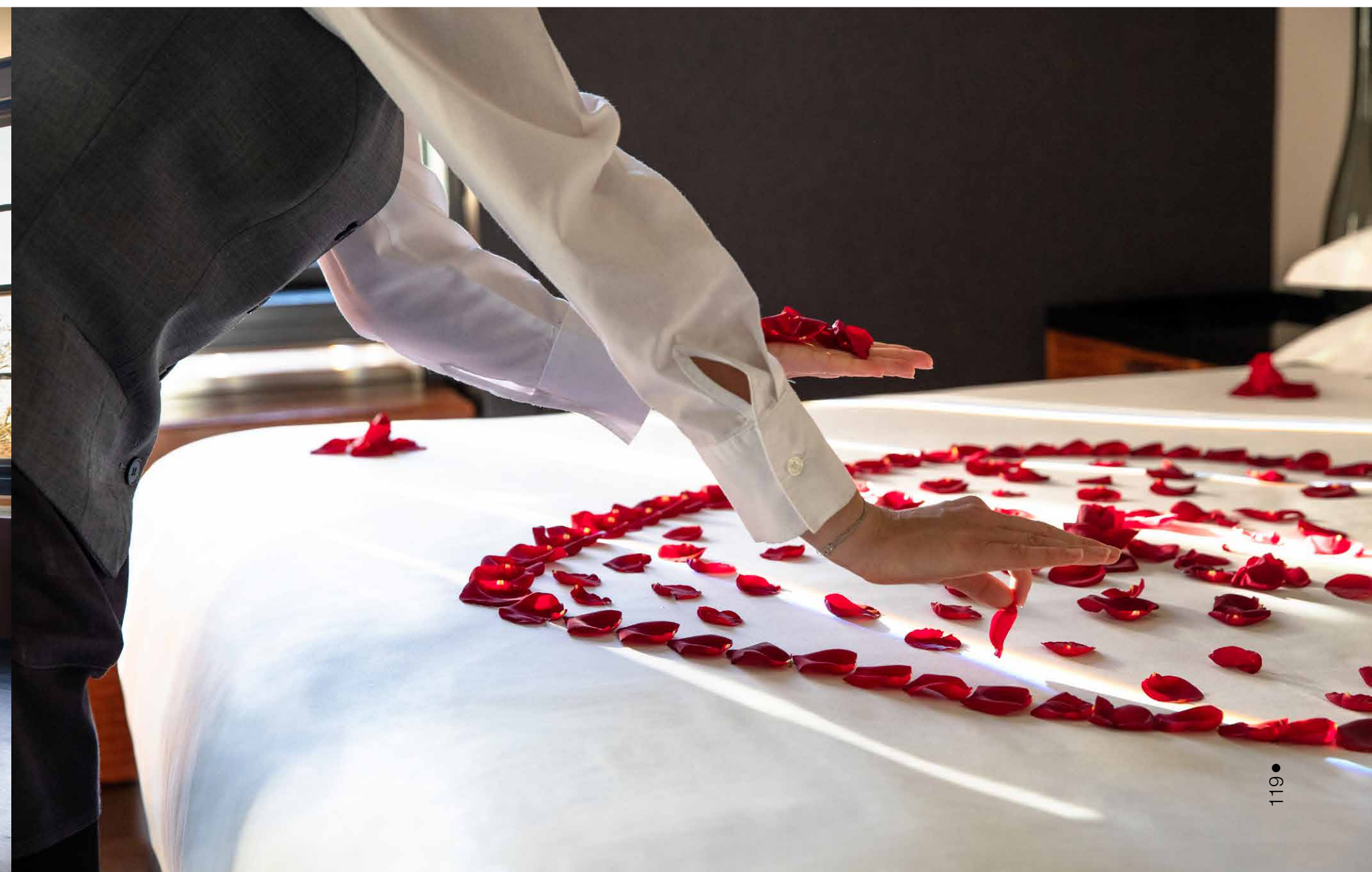
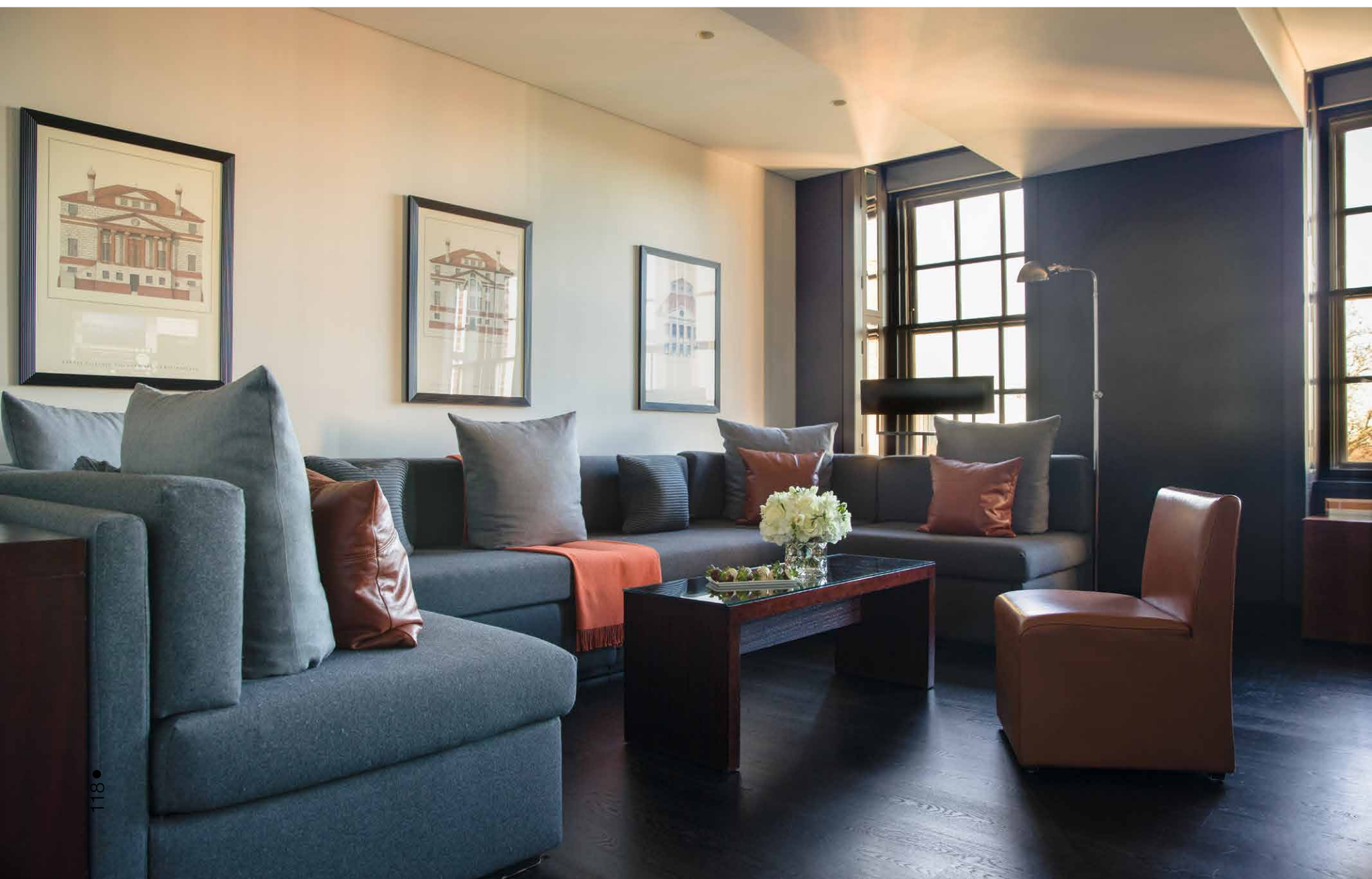
Jumeirah Carlton Tower

The flagship building for Jumeirah's presence in London is the Carlton Tower situated in the heart of Knightsbridge. Planned completion of the project is in summer 2020, and Carlton Tower promises to provide a new level of luxury and opulence to its guests. The design collaborations with London's own 1508 design studio will restyle the buildings 17 floors with prestige, luxury appointments while incorporating the local history of the surrounding neighborhood.

The Carlton Towers re-imagining promises to bring a fresh look to the building with the inclusion of high-end fixtures and luxury redesign of all apartments and suites, and the refurbishing of all public spaces, banquet areas, and conferencing facilities.

Several suites will offer stunning views of the London skyline and the Cadogan Place Gardens. For the enjoyment of guests, the property will feature an exclusive celebrity restaurant, a rooftop deck, state of the art spa, and a large indoor pool. Jumeirah group assures its clientele that this refurbishment will do much to enhance its global presence as a luxury hospitality provider.







Jumeirah Lowndes Hotel

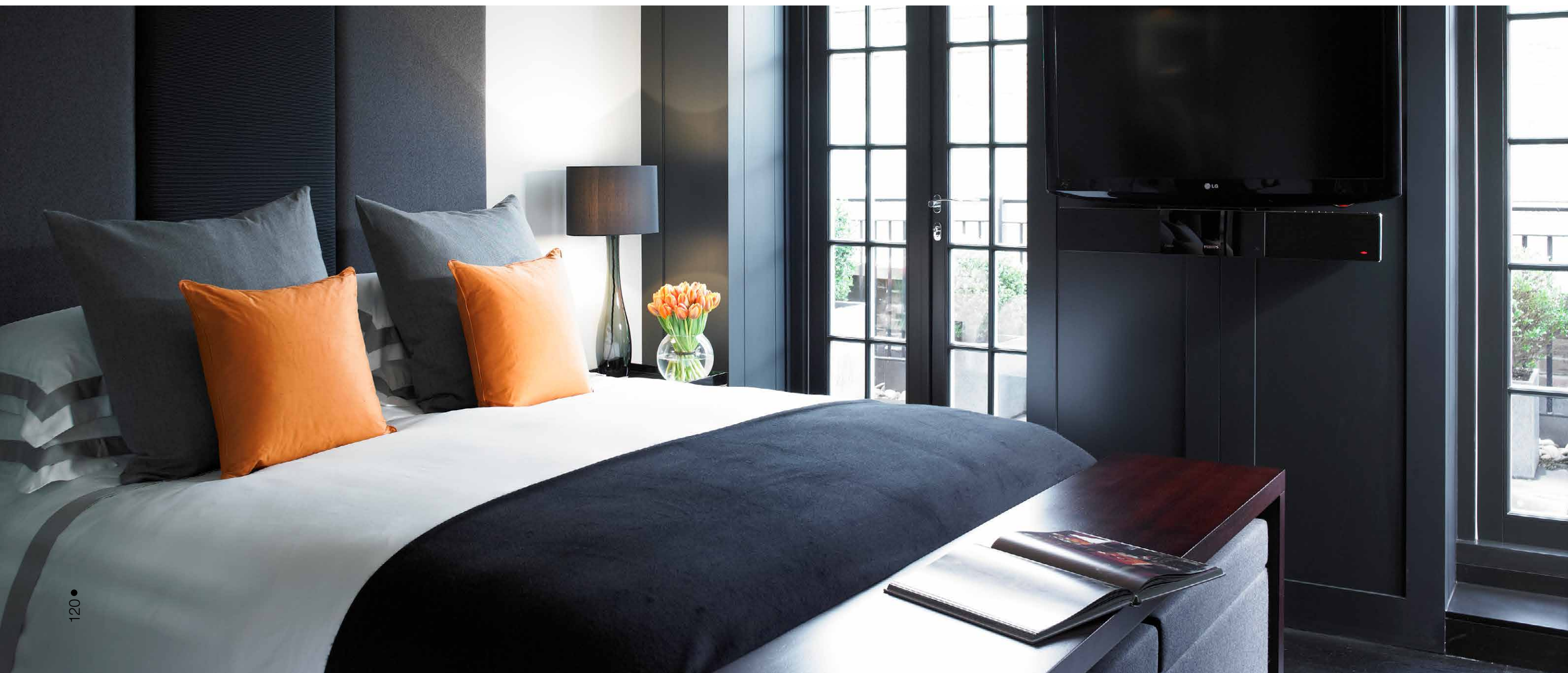
Located just across the street from the Carlton Tower is Jumeirah's boutique hotel in the historic London district of Belgravia. This is the Lowndes Hotel, situated on the famous Lowndes Square, this location is perfect for enjoying the city life and experiencing the shopping of offer at the exclusive stores of Knightsbridge and Sloane Square.

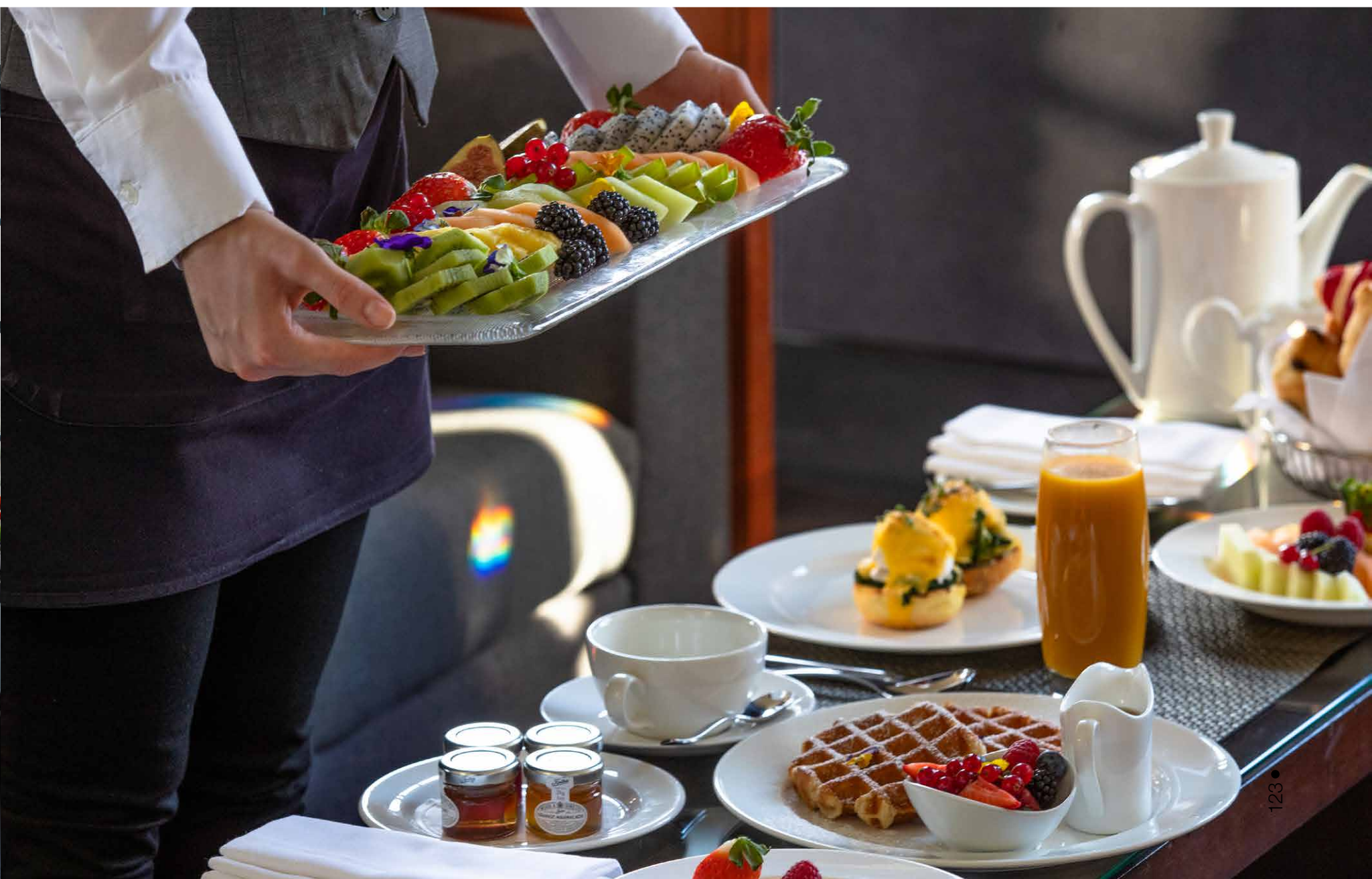
The historic property was the site of one of the first bombings recorded in London at the start of World War II and was subsequently built into a hotel in 1969 by the Berkely Brothers. It was acquired by Jumeirah and became part of their luxury hospitality portfolio in 2005. The hotel was closed briefly and reopened in 2006 after a multi-million-pound renovation turned it into the luxury and elegant property that it is today.

The Lowndes Hotel is Jumeirah's smallest property but it still provides much in the way of amenities for its guests. There is a well-stocked library that provides books and publications, and the Book and Brunch Sundays are a popular event at the property. A collaboration with the renowned Belgravia Books keeps the library full of writings by famous authors. You can expect to see titles from luminaries such as Vita Sackville-West and Mary Shelley.

Guests staying at the hotel also have the benefit of being able to use the state of the art spa facilities of the Peak Health Club and Spa at the neighboring Jumeirah's Carlton Tower property. For dining, there is the Lowndes Bar and Kitchen which serves a selection of classic and contemporary dishes in a modern and relaxed atmosphere. To enjoy al fresco dining guest may take advantage of The Terrace, an outdoor dining area on a hidden square where patrons may enjoy the patio style surroundings and have a late-night cocktail or a weekend barbeque feast.

If you are traveling to London for a business trip or for leisure purposes, then any of the Jumeirah range of luxury hotels will offer a sumptuous location for you to stay. The level of luxury and elegance at each of their properties will create a peaceful and enjoyable base for your visit. As their properties are situated conveniently in some of the best neighborhoods in the city, you will always be close to all that London has to offer. ⊕









2019 VENICE
ART BIENNALE:
EUROPE AT
HER VERY BEST

Photos: Palazina Grassi Hotel, San Clemente Palace, Henrique Ferreira, Pablo Ferrero
Words: Andrew Paniello



Nestled between the Po and Piave rivers, right along the Venetian Lagoon, Venice has long been known as a destination full of beauty, majesty, and wonder. She is a city that has enchanted those around the world, calling adventurers everywhere to explore her canals and experience a city that—in many ways—is unlike any other in the world.

Since it was established as the capital and premier city within the Republic of Venice (697-1797), Venice has long played an important role as a proliferator of European art. As you navigate her many nooks and crannies, the eternal beauty of this art becomes immediately apparent. Beyond the many statues and paintings, you'll find within her domain, you will also discover architecture that has been able to withstand the tests of time. Even in a country such as Italy, who has long been known as one of the art capitals of the world, Venice still stands out, like a diamond in the rough.

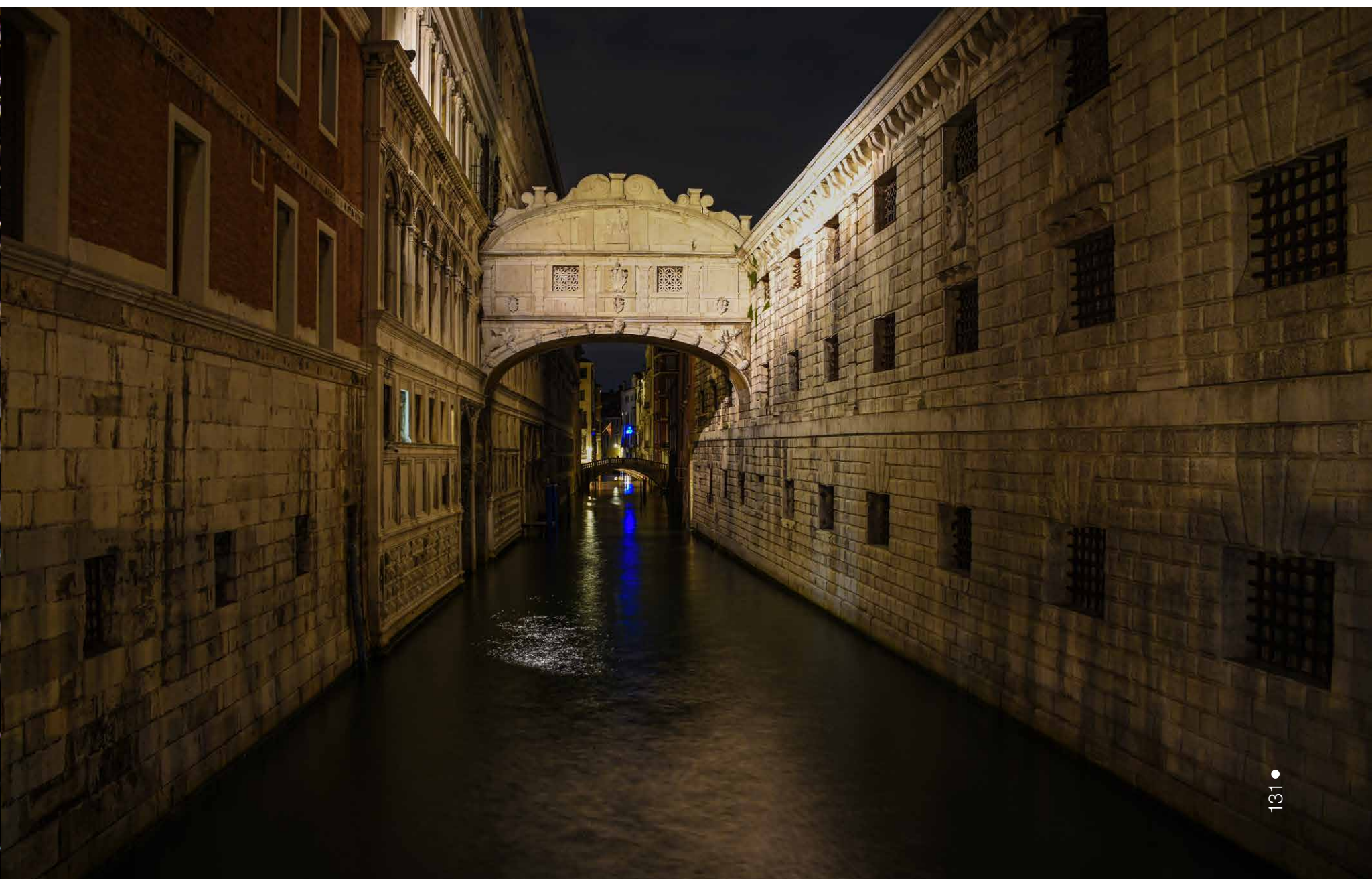
Naturally, if there is anywhere in the world that is worthy of hosting a half-year long art festival, it's Venice. For the 58th time, La Biennale di Venezia has attracted art enthusiasts far and wide, enabling them to witness a seemingly endless array of beautiful works, spread out over many different mediums. The festival, which this year takes place between May 11th and November 24th, is one that has attracted the attention of the entire NAVIS team. Though the time spent experiencing the festival was finite, there is no doubt that the memories made here are sure to last a lifetime.

Getting to Know the Queen of the Adriatic

Venice has long been referred to as the “Queen of the Adriatic,” and from the moment you begin to experience her truly legendary and majestic beauty, it becomes that this nickname is one that is well-earned. Upon our initial arrival, we look around, basking in the glory of the North Italian summer sun and enjoying the energy of a city, unlike any other in the world.

Our hotel, Palazzina Grassi, is located directly upon the well-known—and still well-preserved—Grand Canal. It is a hotel that is as charming as it is inviting and is the “only five-story luxury boutique hotel designed by Philippe Starck.” Even upon first glance, it is clear that the design team was able to combine Venice's timeless aesthetics with the luxuries of the modern era.

The Palazzina Grassi has, rightfully, been described as “a home away from home, a discreet, welcoming and cosmopolitan place with an outstanding atmosphere.” She captures the hospitality that Italians are well-known around the world for having, and represents the perfect place to have a drink, excellent food, and enjoy fantastic views of the Grand Canal. In the words of Philippe Starck, “subversive, ethical, ecological, political, humorous... this is how I see my duty as a designer.” As we stroll around Palazzina Grassi, it becomes clear that the design exceeded the public's already high expectations. Murano glass, mirrors, and traditional Venetian architecture can be immediately accessed. Even before we begin our venture towards Venice's world-renowned arts festival, the transcendental beauty of the Adriatic's Queen cannot be denied.



A Legendary Arts Festival

This year, the title of the Biennale di Venezia—an event that takes place once every two years—is May You Live in Interesting Times. As described by the event's president, Paolo Baratta, this title may invoke “an invitation to always see and consider the course of human events in their complexity, an invitation, thus, that appears to be particularly important in times when, too often, oversimplification seems to prevail, generated by conformism or fear.”

As we began to indulge the festival, it appears that neither conformism nor fear could possibly be allowed in Venice. The beautiful works of art are nestled throughout the city, each expressive and intriguing in its very own right. Many of the special works of art, referred to as the “collateral pieces” are blended directly into the city, juxtaposing post-modern art with buildings that have been around for centuries.

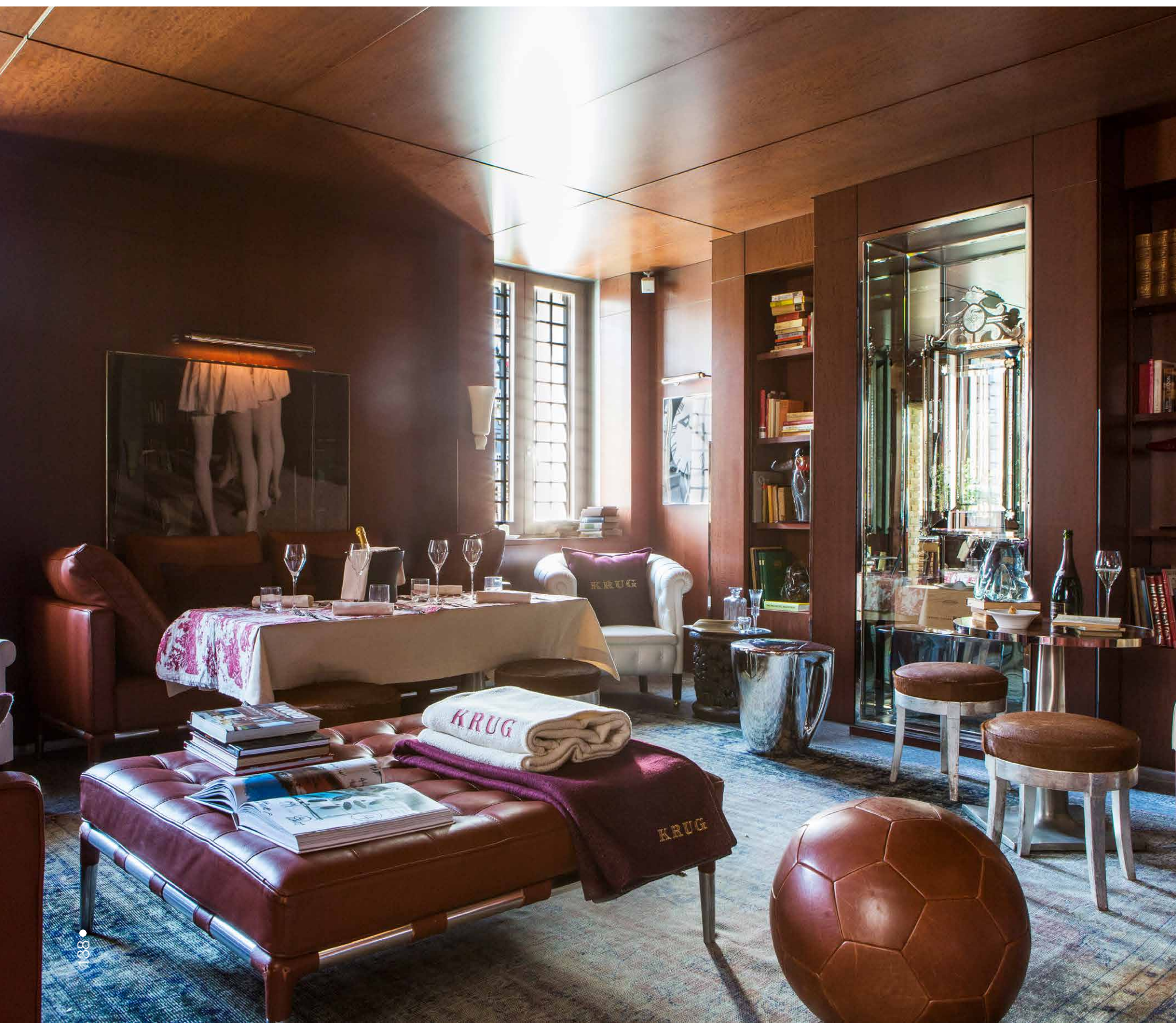
We see works that challenge contemporary methods of thinking, works that challenge our once-rigid conceptions of form and geometry, and works that make us carefully reconsider what it means to be human in the 21st Century. These are very interesting times, indeed—as we continue wandering through Venice, it appears that we, collectively, are on the verge of redefining the very nature of our being.

Artists have come from all over the world to display their carefully crafted works, allowing the event to have a truly cosmopolitan feel. Ralph Rugoff, the curator for this magnificent event, spared nothing when trying to create a thought-provoking and legendary experience for all to enjoy. He described the Interesting Times approach as one that “focuses on artists who challenge existing habits of thought and open up our readings of objects and images, gestures, and situations.” He later goes on to suggest, “Their work invites us to entertain alternative perspectives, and to discern the ways in which ‘order’ has become the simultaneous presence of diverse orders.” The sheer diversity and volume of available exhibits, it seems, have taught us lessons and have opened our eyes in a way that seems irreversible.









Living Art, through Architecture and Cuisine

There was seemingly no limit to the amount of beauty and revolutionary works of art that could be found throughout Venice and the surrounding areas. The largest lesson we learned while indulging our every sense is that art has no permanent form. Art has no permanent definition. Art is anything that causes us to feel, to think, to understand the truly limitless amount of beauty in our world. Art is something that can be found in every square inch of Venice and beyond.

Venice has long been known as a “living masterpiece of architecture”; it is a city that not only contains beautiful works of art, but it is a city that exists as a work of art, in and of itself. Upon our return to Palazzina Grassi, we are ready to look at the world with a whole new perspective.

While sitting in Palazzina Grassi’s beautiful rooftop garden, we bask in a sense of serenity, knowing that we will never be able to view our world in such a limited way again. Just as it seems our senses cannot be stimulated any further, Chef Fabio Mani approaches us, ready to deliver a masterfully crafted five-course meal. Once again, the term “art” appears to have transcended an otherwise rigid definition.

There are few places, if any, as sensual and romantic as Venice. The fresh fish, gazpacho, risotto, and sea bass burger were all created with the perfect combination of flavors, allowing us to experience each bite as if it were yet another work of art. The intimate setting of Palazzina Grassi makes it possible to enjoy each course without distractions. Even in a world-renowned city such as Venice, it is still possible to have a moment alone near the Grand Canal.

Of course, no culinary journey to Venice is complete without a visit to Acquerello Restaurant. Located in the San Clemente Palace Kempinski Hotel, this testimony to culinary excellence combines rich traditions, breath-taking views, and a luxury dining experience that has been often referred to as the best in the city. Led by Chef Giorgio Shiffregger, “diners can enjoy a complete sensory experience, mixing surprising and delightful combinations of local food and exquisite wine.” With fresh vegetables grown in the restaurant’s very own garden and recipes that “reproduce the colors and the emotions of the sunset”, Acquerello Restaurant helps capture the care and craftsmanship that make Venice such a legendary city.



A City Worthy of Universal Acclaim

As our time spent in the Queen of the Adriatic begins to wind down, we cannot believe how transformative and lifechanging this experience truly was. Even in an industry where luxury, fine dining, and attention to detail are the absolute norm, it seems nothing before this adventure has had such a profound impact on the way we view our world. Venice is a city that is already well-known for being one of a kind, comparable to nowhere else and capable of defining itself on its own. But for those who have had a chance to explore her and experience her majesty firsthand, there is no doubt that she is so much more.

As we move forward, we'll reflect and think about the ways we experience and indulge our world. With the sun setting in the background, it appears that the beauty of Venice—and the important messages she and her brilliant art festival contain—is something that we will be able to carry forward and bring home. Even if there are two more years before we'll be able to enjoy La Biennale di Venezia again, there is still a part of this experience that transcends place and time. Venice is so much more than a simple destination; it is an essence, it is an idea, it is a revolutionary state of mind. ⊕







NAVIS™

US Best Superyacht Design Magazine

Subscribe
Today

Visit:

www.navisyachts.com/store/

Call:

+1 786 406 6111





Quality and
Performance
are at the heart
of every sail
we make.

www.greatcirclesails.com
+1 617 271 0712